



CLEANERS



LUBRICANTS



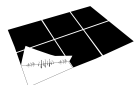
ANTI-CORROSION



PAINTS



WELDING



ADHESIVES



SPECIALTY



ACCESSORIES



INDUSTRIAL PRODUCTS



MRO CHEMICAL SOLUTIONS

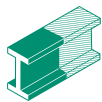


CLEANERS



LUBRICANTS

**CRC Industries** is a worldwide supplier of chemical products for the industry, automotive and electro segments. The company consists of four operating groups headquartered in the United States, Belgium, the United Kingdom and Australia. CRC Industries Europe is ISO 9001 certified.



ANTI-CORROSION

We manufacture and supply cleaners, lubricants, anti-corrosion products, adhesives, welding products, additives, moulding products and other specialty products...all for the European, African and Middle East areas.

We guarantee high quality products by following strict guidelines in all facets of research, development and production. We try to meet today's most stringent environmental and safety standards. Furthermore CRC develops new products and continues to adapt existing products to meet the needs of our customers.



PAINTS

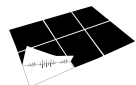
For detailed product information, Technical Data and Material Safety Data, please consult our website:

**[www.crcind.com](http://www.crcind.com)**



WELDING

**“SEE FOR YOURSELF THAT CRC IS THE BEST SOLUTION!”**



ADHESIVES

All statements in this publication are based on service experience and/or laboratory testing. Because of the wide variety of equipment and conditions and the unpredictable human factors involved, we recommend our products to be tested on-the-job prior to use. All information is given in good faith but without warranty neither expressed nor implied.



SPECIALTY

**Note:** The CRC product range is country-related. It is possible that some products, listed in the catalogue, might not be available. Product pictures not binding. Actual product may be different from picture due to change-over to new design.



ACCESSORIES



# CONTENT

<b>MY CRC</b>	<b>4</b>
<b>FPS - FOOD PROCESSING SAFE</b>	<b>5</b>
<b>ECO FRIENDLY PRODUCTS</b>	<b>6</b>
<b>CLEANERS</b>	<b>8-19</b>
Precision	10
Heavy-duty	11-14
Water based	15-17
Handcleaners	18-19
<b>LUBRICANTS</b>	<b>20-37</b>
Cutting fluids	22-23
Oils	24-26
Dry lubrication	27
Greases	28-30
Pastes	31
Technical info	32
FPS Bulk oils	34-35
<b>ANTI-CORROSION PRODUCTS</b>	<b>36-41</b>
Temporary	37
Durable	38-40
Overview	41
<b>PAINTS</b>	<b>42-45</b>
Marking & Signalisation	43-44
Other	45
<b>WELDING PRODUCTS</b>	<b>46-48</b>
Spatter release	47
Cleaners	47
Non-Destructive Testing (NDT)	48
<b>ADHESIVES</b>	<b>49-51</b>
Locking	50
Sealing	50
Bonding	51
<b>SPECIALTY PRODUCTS</b>	<b>52-53</b>
<b>ACCESSORIES</b>	<b>54</b>
<b>DISPLAYS</b>	<b>55</b>
<b>ISO 9001</b>	<b>56</b>
<b>ANIMATED PRODUCT VIDEOS</b>	<b>57</b>
<b>GLOSSARY</b>	<b>58</b>
<b>INDEX</b>	<b>59</b>

# MY CRC

## AUTOMATIC MSDS UPDATES



A service offered to CRC end-users and distributors as a means to automate the task of updating Technical Data Sheets (TDS) and Material Safety Data Sheets (MSDS), reducing the burden on staff having to remember, schedule, and undertake this HSE requirement.

By using My CRC, the end-user can ensure 100% compliance, automatically when there is a change to the data-sheets, whether due to legislative changes such as hazard classifications or amendments to European law. These changes do not affect the product performance or availability, but in a highly regulated industry - up to date compliance is essential to avoid prosecution. The ongoing REACH legislation will affect all processors, distributors, and users of chemicals throughout Europe, however, many people are unaware of what this means. Using My CRC ensures that such changes will be incorporated into the MSDS and TDS, with updates sent automatically.

Offered through the CRC website ([www.crcind.com](http://www.crcind.com)) a simple registration process provides access to the complete CRC product range where selection of relevant products takes place - receive only relevant products updates.

The system remembers the selection, and will automatically generate an email notification when a significant change occurs to either the TDS or MSDS, keeping relevant management and user personnel up-to-date.

### **A unique service, making compliance easy!**

- 24/7 availability on-line.
- Removes the potential to 'forget' to check for updates.
- Saves time & easy to use.
- Legislation changes frequently, do you always know when it has? Receive updates automatically in your mailbox.
- All information held securely.

## MY CRC - DIRECTIONS

1. Navigate to [www.crcind.com/crc](http://www.crcind.com/crc).
2. Click on the My CRC logo.
3. Select the link "New User".
4. Fill in company details.
5. The unique log-in ID and password will be emailed to you.
6. Enter the log-in ID and password on My CRC.
7. Once logged in, select the country from the drop-down list at the top of the page.  
The complete list of CRC products will now be displayed - using the selection boxes on the right, both MSDS and TDS updates can be selected.
8. Please confirm your selection, My CRC instantly updates which boxes have been selected.
9. Once all products of interest have been selected, simply close your internet browser - the process is now finished.
10. If product selection needs to be modified, simply log-in to My CRC and change the update options (click on the My CRC logo to update email preferences).



# FPS

## FOOD PROCESSING SAFE



### NSF EXPLAINED

NSF is an abbreviation for the National Sanitation Foundation, which was founded in 1944 as a not-for-profit, non-governmental organisation. NSF International is a global provider of public health and safety risk management solutions to companies, governments and consumers. In 1999, it launched its voluntary Nonfood Compounds Registration Program to re-introduce the previous authorisation program administered by the U.S Department of Agriculture (USDA). Product evaluation is based on formulation and label review. Products which comply with the relevant regulations and guidelines receive a registration letter and are included in the 'NSF White Book™ Listing of Proprietary Substances and Non-food Compounds'.

### USDA

The USDA (United States Department of Agriculture) used to authorise the use of non-food compounds, including cleaning agents and lubricants, within the Food Industry sector. In 1999, this former authorisation program was reintroduced as a voluntary registration program by NSF International. USDA categories for lubricants: USDA H1 for incidental food contact USDA H2 for where there is no possibility of food contact.

### CRC FPS (Food Processing Safe)

Depending on the application, all CRC FPS products are designed for use in the food processing areas. Restrictions might apply to products having double codes when used as a "general purpose" C1 cleaner.

All CRC FPS products are NSF registered.

Food contact:

Only H1 lubricants can be used where incidental food contact is possible.

### GREEN LIGHT PROGRAM

- Helps you PREVENT food contamination.
- Assists companies engaged in the processing of food products in the handling, evaluation and control of maintenance chemicals.
- Will become a valuable component of your facility's Hazard Analysis Critical Control Point – HACCP-Program.
- Over 30 different H1 registered CRC products available.



### NSF CATEGORIES

#### Cleaning products

Food & packaging materials to be removed or protected. Potable water rinse. No noticeable odor and no visual residue.

- A1** General use.  
General cleaning on all surfaces in all departments.
- A7** Metal cleaners & polishes for non-food contact surfaces in all departments.  
Odors to be dissipated before food & packaging materials are re-exposed in the area.
- A8** Degreaser/carbon removers for food cooking or smoking equipment (hence in all departments).  
Odors to be dissipated before food & packaging materials are re-exposed in the area.  
Non-processing area cleaning products.
- C1** Use of cleaning or sanitizing products on equipment.  
Water rinse required before returning equipment to the food processing area.

#### Solvent cleaners

- K1** Cleaners & degreasers for use in non-processing areas.  
Detergent wash + water rinse required before returning equipment to the food processing area.
- K2** Solvent for cleaning electronic instruments.  
Food & packaging materials to be removed or protected.  
Odors to be dissipated before food & packaging materials are re-exposed in the area.
- K3** Adhesive & glue removers for food packaging materials.  
Food & packaging materials to be removed or protected.  
Detergent wash + water rinse required before re-using.  
Odors to be dissipated before food & packaging materials are re-exposed in the area.

#### Lubricants

Used on food processing equipment as :

- anti-rust film (removal of film before re-using equipment)
- release agent on gaskets or seals of tank closures
- lubricant

- H1** Lubricant with incidental food contact  
(in compliance with FDA 21 CFR, section 178.3570).
- H2** Lubricant with no food contact.

#### Specialty

- P1** Miscellaneous.

# ENVIRONMENT

## ECO FRIENDLY PRODUCTS



### DEFINITION

The terms "ECO", "GREEN", "BIO" ...are often used referring to different kinds of products, but do not really have a clear, unmistakable meaning as long as these characteristic words do not get a legally binding definition. In case of chemical products, proper registrations can only be provided through test analyses performed by internationally recognized testing laboratories.

### CRC'S APPROACH

CRC has chosen to apply for registration of these products in accordance with OECD test guidelines (Organisation for Economic Co-operation and Development).

Particularly for our investment in sustainable innovation and our concern for our consumer's health, CRC now offers a full range of high performance products which have a low impact on our environment.

This range of products has been currently categorised into 2 levels:

### LEVEL 1



High level of biodegradability in accordance with the OECD 301B standard. Products meeting this standard will be labelled holding this logo. They will also carry the term "ECO" in their titles.

Biodegradation test OECD 301B

- A high concentration of the test material is mixed with a bacterial mixture and the ultimate degradation within 28 days period is evaluated based upon the CO<sub>2</sub> production. A product is considered "readily biodegradable" when 60% of the theoretical amount of CO<sub>2</sub> is produced within the 28-day period of the test.
- A negative result does not necessarily mean that the product will not be degraded under relevant environmental conditions. It is generally accepted that products reaching between 20 and 60% biodegradability can be considered as "inherently biodegradable".

### LEVEL 2



Environmentally preferred products.

Each product will meet a certain selection of ecological criteria: The total of general criteria and a minimum of 3 extra specific criteria (see right column).

### GENERAL CRITERIA (Exclusion Criteria)

1. Each formula will not contain:
  - Heavy metals such as mercury (Hg), lead (Pb), cadmium (Cd) etc. known for their toxicity and persistence in the environment. (ref 1)
  - Substances of Very High Concern (SVHC). (ref 2)
  - Substances with a Global Warming Potential > 150 such as HFC's. (ref 3)
  - RoHS listed substances. (ref 4)
  - Nitrites.
  - Aromatic hydrocarbons.
  - Chlorides & bromides.
  - Phosphates and Nonyl Phenols in case of cleaners.
2. Each formula will not be classified as "toxic or very toxic to aquatic organisms, may cause long-term adverse effects in the aquatic environment".
3. Each formula will not be classified as "may cause sensitization by inhalation and skin contact".

### PRODUCT SPECIFIC CRITERIA (Inclusion Criteria)

Each formulation will meet a minimum of three of the following criteria (product category depended).

1. Main component is water or contains at least 50% renewable materials (ref 5). In case of lubricants the amount of renewable material is at least 70%, in case of greases at least 45%. (ref 6)
2. Formula contains less than 10 % Volatile Organic Components (VOC). (ref 7)
3. Ecological packaging. (ref 8)
4. For products listed as corrosion protection, provide a Salt Spray protection of at least 250 hours. (ref 9)
5. Inherently biodegradable according to OECD 302C\*. (ref 10)
6. Readily biodegradable according to OECD 301\*\*. (ref 11)
7. Meets the criteria of the European Eco-Label

(see also [www.eco-label.com](http://www.eco-label.com)). (ref 12)

Ref 1. E. Lawrence, A.R.W. Jackson, J.M. Jackson (Eds). Longman Dictionary of Environmental Science, Addison Wesley Longman, Harlow (1998). Ref 2. Annex XV, Regulation (EC) 1907/2006 concerning the Registration, Evaluation, Authorization and Restrictions on Chemicals Ref 3. Directive 2006/40/EC relating to emissions from air-conditioning systems in motor vehicles. Ref 4. Directive 2002/95/EC of the European Parliament and of the council of 27 January 2003 on the restriction of the use of certain hazardous substances in electrical and electronic equipment. Ref 5. Commission decision 2005/360/EC establishing ecological criteria and the related assessment and verification requirements for the award of the Community eco-label to lubricants, Annex, paragraph 5 Ref 6. Commission Decision 2005/360/EC establishing ecological criteria and the related assessment and verification requirements for the award of the Community eco-label to lubricants, Annex, paragraph 5 Ref 7. Commission Decision 2005/344/EC establishing ecological criteria for the award of the Community eco-label to all-purpose cleaners and cleaners for sanitary facilities, Annex paragraph 8 - Volatile organic components with a boiling point lower than 150°C Ref 8. ecological packaging: Directive 94/62/EC on packaging and packaging waste. Ref 9. ASTM B117 Ref 10. inherently biodegradability (modified MITI test): OECD 302C Ref 11. readily biodegradability: OECD 301 (A-F) Ref 12. Commission decision 2005/360/EC for lubricants - Commission decision 2005/344/EC for cleaners

\* / \*\* BIODEGRADATION = the breakdown of chemical substances by living organisms. The end result of biodegradation is often the complete conversion of organic substance to CO<sub>2</sub> and water.

\* INHERENT BIODEGRADABILITY (OECD 302): Test performed under more favourable conditions for biodegradation. Chemicals that pass an inherent biodegradability test are considered non-persistent, although the breakdown of the chemical in the environment may be slow.

\*\* READY BIODEGRADABLE (OECD 301): Test performed in most stringent test conditions. Chemicals that are shown to pass a ready biodegradability test rapidly degrade in wastewater treatment plants and in the natural environment.



# WEBSITE

CRC INDUSTRIES EUROPE



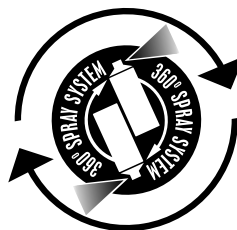
GO TO [WWW.CRCIND.COM](http://WWW.CRCIND.COM) AND DISCOVER OUR WEBSITE!

## MULTI-LANGUAGE CANS:

- Depending on the market version, aerosol products display either 31 languages per can or 8 languages as standard.
- This ensures foreign employees can use products and understand risk phrases
- CRC products can be exported globally for international branches and end-users  
Reduces risk of workplace accidents or inappropriate use and improves user safety
- All SDS are available in up to 31 languages from [www.crcind.com](http://www.crcind.com)



## 360° SPRAY SYSTEM



# CLEANERS

## PRECISION

### DUST REMOVAL

 <p><b>DUST FREE</b> Non-Flammable</p>	<p><b>FOOD PROCESSING SAFE</b></p>  <p><b>NSF</b></p> <p><b>DUST FREE (FPS)</b> Non-Flammable</p>	 <p><b>GAS DUSTER</b> Flammable</p>
---	--	--



### CLEANING OF LIGHT CONTAMINANTS

<p><b>FOOD PROCESSING SAFE</b></p>  <p><b>NSF</b></p> <p><b>CONTACT CLEANER</b> Plastic safe: Average</p>	 <p><b>CONTACT CLEANER PLUS</b> Plastic safe: Yes</p>	 <p><b>QD-CONTACT CLEANER</b> Plastic safe: Yes</p>	 <p><b>N.F. PRECISION CLEANER</b> Non-Flammable Plastic safe: Average</p>
--	--	--	--

## HAND CLEANERS

### LIQUID SOAP

 <p><b>HANDCLEANER</b> For light contaminants</p>	 <p><b>SUPER HANDCLEANER</b> For heavy contaminants</p>	 <p><b>CITRUS HANDCLEANER</b> For heavy contaminants</p>
--	--	---



### WIPES

 <p><b>HAND WIPES</b> For heavy contaminants</p>	 <p><b>WIPES</b> For heavy contaminants</p>
---	--

**MULTI PURPOSE**



# HEAVY-DUTY

## SOLVENT BASED

 <p><b>FAST DRY DEGREASER</b> Plastic safe: Average</p>	 <p><b>INDUSTRIAL DEGREASER</b> Flash point: 25°C Drying: Medium</p>	 <p><b>LECTRA CLEAN II</b> Flash point: &gt;60°C Drying: Slow</p>	 <p><b>GRAFFITI REMOVER</b> For graffiti</p>
--	---	--	---

 <p><b>LABEL OFF SUPER</b> For paper labels.</p>	 <p><b>FOODKLEEN</b> For heavy contaminants</p>	 <p><b>ECO COLD CLEANER</b> Environmentally Preferred</p>	 <p><b>INOX WELD KLEEN</b> Pickling paste</p>	 <p><b>SUGAR DISSOLVING FLUID</b> For sugar contaminants</p>	 <p><b>PAINT &amp; GASKET REMOVER</b> Removes paint and gaskets</p>
---	--	--	--	---	--

## WATER BASED

 <p><b>INOX KLEEN</b> For light contaminants</p>	 <p><b>ECO FOAM CLEANER</b> For heavy contaminants</p>	 <p><b>ECO COMPLEX BLUE</b> For heavy contaminants</p>	 <p><b>PIPE DE-BLOCKER</b> De-blocking agent</p>
---	---	---	---

 <p><b>MULTI SURFACE CLEANER</b> Powerful cleaner and degreaser</p>	 <p><b>TRAFFIC FILM REMOVER</b> Vehicle grime cleaner</p>	 <p><b>HEAVY DUTY DEGREASER</b> Highly concentrated alkaline degreaser</p>	 <p><b>GRAFFITI REMOVER</b> Removes paints, inks,...</p>	 <p><b>SCALE REMOVER</b> Powerful de-scaler</p>
--	--	---	---	--

# CLEANERS - PRECISION

## CRC DUST FREE

Removes dust and loose dirt particles with a jet of dry gas.

CRC Dust Free is a blend of liquefied gasses that removes dust and cleans with a powerful dry jet. It prevents short circuits, downtime and damage caused by microscopic dust in electronic devices, PLC's, data processing equipment, servo-mechanisms, sensors and optical instruments.



Ref.	SIZE
30702	Aerosol 200 ml

## CRC DUST FREE (FPS)

High pressure dust remover.

Efficient high pressure liquid gas blend that removes dust and cleans with a powerful jet of dry inert gas. It prevents errors, downtime and damage caused by microscopic dust. Leaves no residue or condensation. Designed for use as a cleaner for electrical or electronic equipment in food processing or non-processing areas.



Ref.	SIZE
20108	Aerosol 400 ml

## CRC GAS DUSTER

Residue-free dust remover.

For use on electro-mechanical assemblies, electrical aggregates, electronic components, printed circuit boards, coin mechanisms and precision instruments. Clean, dry and non-oily. The CRC Gas Duster has no ozone depleting actions.

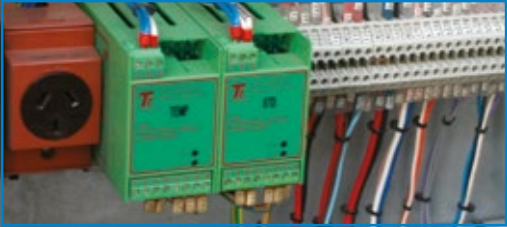


Ref.	SIZE
32402	Aerosol 250 ml

**CRC CONTACT CLEANER**

Effective precision cleaner.

Residue-free contact cleaner for use on PCB's and electronic equipment. Fast drying. Not for use on energized equipment. Developed for use as a cleaner for electrical or electronic equipment in food processing or non-processing areas.



Ref.	SIZE
12101	Aerosol 500 ml



**CRC CONTACT CLEANER PLUS**

Cleaning, de-oxidation, lubrication and protection of electrical contacts.

Safe on plastic and rubber. CRC Contact Cleaner Plus provides long lasting lubrication which is safe to use on all metal surfaces, most rubbers, plastics and coatings. Contact Cleaner Plus is non corrosive. It also has a no ozone depleting action.



Ref.	SIZE
32180	Aerosol 500 ml



**CRC QD-CONTACT CLEANER**

Quick drying solvent cleaner for light contaminants on electric or electronic parts.

Also compatible with sensitive plastics. Quick drying solvent blend for the cleaning of electronic equipment. It provides a suitable precision cleaning action for sensitive electronic and electrical components without risk of costly damage. CRC QD-Contact Cleaner is a stable, inert, high purity solvent cleaner; formulated for applications where lower flash point solvents may be used and where sensitive plastics are involved.



Ref.	SIZE
30485	Aerosol 300 ml
32429	Aerosol 500 ml



**CRC N.F. PRECISION CLEANER**

Non-flammable solvent cleaner for light contaminants on electrical or electronic parts.

A unique non-flammable precision cleaner suitable for cleaning and degreasing all types of electrical and electronic components where a shutdown is either impossible or very expensive. CRC N.F. Precision Cleaner is free of chlorinated solvents, CFC's and HCFC's; solvent based, non-flammable, dries fast.



Ref.	SIZE
30490	Aerosol 300 ml



# CLEANERS - HEAVY-DUTY

## CRC FAST DRY DEGREASER

Fast drying solvent cleaner for heavy contaminants on mechanical parts, suitable for most plastics. A very fast drying cleaner with a low flash point, which dissolves grease, oil, lubricants and removes contaminants attached to the surface. Designed for applications where flammable solvents can be used. Test before application on sensitive plastics (e.g. EPS, XPS, ABS) or whenever stress cracking of the plastics can be a problem. When using on large surfaces, ensure adequate ventilation.

Ref.	SIZE
10227	Aerosol 500 ml
10230	Bulk 5L
10233	Bulk 20L
31927	Bulk 200L



## CRC INDUSTRIAL DEGREASER

Solvent cleaner for heavy contaminants on mechanical parts. Powerful, fast evaporating cleaner with a flash point of 25°C. Removes greases, oil, lubricants, non-cured adhesives and dirt from equipment, machines and metal parts. When applying to large surfaces or in dip baths, ensure explosion prevention. Test on plastics before use.

Ref.	SIZE
10321	Aerosol 500 ml
10325	Bulk 5L
10326	Bulk 20L
30452	Bulk 200L



## CRC LECTRA CLEAN II

Solvent cleaner with high flashpoint for heavy contaminants on mechanical parts. Heavy-duty cleaner with a high flashpoint of over 60°C for improved application safety. The extended drying time allows the product to act during a longer period and to dissolve heavy contaminations. Suitable for use in dip baths and ultrasonic dip tanks.

Ref.	SIZE
30449	Aerosol 500 ml
10314	Bulk 5L
10315	Bulk 20L
30450	Bulk 200L



## CRC GRAFFITI REMOVER

Removes all traces of paint and ink.

Dissolves and loosens unwanted paint and inks from aerosols, pens and markers. Safe to be used on most substrates. In case of doubt, test prior to application. Prevents damage to the original surface due to excessive scratching. Does not leave an acid or alkaline residue, which could damage concrete, plaster or cement.



Ref.	SIZE
20717	Aerosol 400 ml



## CRC PAINT & GASKET REMOVER

Non chlorinated solvent to remove gaskets, glues and baked-on carbon deposits from all kind of hard substrates.

None chlorinated solvents. Safe to use on all metal surfaces, does not stain. Quickly and easily dissolves paints and graffiti. Suitable for use throughout the industry.



Ref.	SIZE
32370	Bulk 5L



## CRC LABEL OFF SUPER

Label remover.

Solvent mixture, free of CFC's and HCFC's. Removes self-adhesive paper labels from most surfaces in 2-3 minutes after wetting (test on plastics prior to use). NSF listed as an adhesive and glue remover (NSF K3).



Ref.	SIZE
20136	Aerosol 200 ml
32314	Aerosol 400 ml



## CLEANERS - HEAVY-DUTY

### CRC FOODKLEEN

Fast drying solvent cleaner, for dissolving heavy contaminants in food processing areas.

A solvent blend designed for use in the food industry; NSF A8,C1 registered.

The flash point is 40°C for safe application. Dissolves grease, oil, lubricants, and non-cured adhesives.

Ref.	Size
12056	Aerosol 500 ml
20119	Bulk 5L



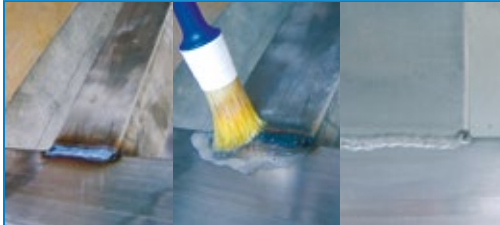
### CRC INOX WELD KLEEN

Restores the original characteristics of Stainless Steel after welding.

CRC Inox Weld Kleen is a pickling paste that restores the original characteristics of stainless steel after welding or heat treatment. Degreasing, cleaning, pickling and passivating of austenitic and duplex stainless steel 303, 304, 316, ..., nickel and aluminum.

Fast-working, very efficient, economical and practical to use.

Ref.	SIZE
30379	Bulk 2 Kg

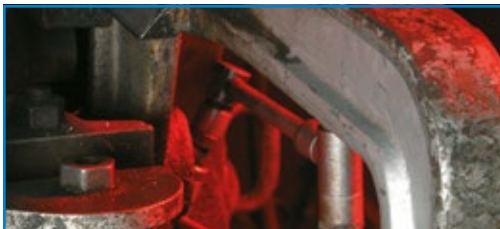


### CRC ECO COLD CLEANER

Biodegradable, solvent based degreaser for mechanical parts.

Fast drying and powerful cleaner. Cleans and degreases all metal parts, machines and tools. CRC ECO Cold Cleaner penetrates quickly and removes grease, oil and dirt. Readily biodegradable: OECD 301B: 62%

Ref.	SIZE
31908	Aerosol 500 ml
31914	Bulk 5L



### CRC SUGAR DISSOLVING FLUID

Dissolves fondants and sugars from a variety of surfaces in the food processing industry.

Quickly dissolves and removes sugars, fondants and derivatives. Leaves a light lubricating film that inhibits re-adhesion. Quickly penetrates and lifts sugar layer: Does not contain nut oils or nut oil derivatives.

Helps prevent sugar build-up on fasteners. NSF H1 Registered No. 144180.

Ref.	SIZE
30204	Bulk 5L



**CRC INOX KLEEN**

Water based, foaming cleaner for degreasing and cleaning shiny metal surfaces. CRC Inox Kleen is NSF A7,C1 registered for use in the food industry. It eliminates fingerprints, watermarks, dust and dirt from stainless steel. It leaves a protective non-greasy barrier for a long-term original aspect and provides metal surfaces with a long-term staining and contamination resistance. CRC Inox Kleen is also suitable for aluminum, chrome and most plastics (test prior to use).

Ref.	SIZE
20720	Aerosol 500 ml



**CRC ECO FOAM CLEANER**

Non-flammable, slow drying water based cleaner, suitable for removing heavy contaminants in vertical applications in food processing areas. A concentrated, water based degreaser for use in the food industry; NSF A1 registered. The stable, non-dripping foam formula ensures a long contact with the contamination, especially on vertical surfaces. Rinse with water after application. Readily biodegradable according to OECD 301B: 64%.

Ref.	SIZE
10278	Aerosol 500 ml



**CRC ECO COMPLEX BLUE**

Non-flammable, slow drying water based cleaner for heavy contaminants in food processing areas. A concentrated, water based degreaser for use in the food industry; NSF A1 registered. Excellent product for use in dip tanks, pressure washer, ultrasonic and steam cleaning equipment. Dilute according to information on the datasheet. Safe on plastics. Rinse with water after application. Readily biodegradable concentrate according to OECD 301B: 64%.

Ref.	SIZE
10286	Handsprayer 750 ml
10282	Bulk 5L
20123	Bulk 20L
30431	Bulk 200L



## CLEANERS - WATER BASED

### CRC PIPE DE-BLOCKER

Powerful de-blocking agent.

Water based, concentrated blend of caustic soda, surfactants and complexing agents. Highly alkaline, penetrates thick grease and fat residues. May be used for preventive maintenance.

**Directions:**

Pour the concentrate into the drain and leave to stand, preferably overnight. Rinse with warm running water.



Ref.	SIZE
30030	Bulk 1L



### CRC GRAFFITI REMOVER

Removes traces of paints, inks and marker pens.

Versatile water based cleaner for the removal of general graffiti. Thixotropic solution for application to vertical surfaces. Ideal for use on delicate surfaces and safe for use on most substrates.

**Directions:**

Apply directly to the graffiti. Use of a brush may be required on porous surfaces. Leave until the graffiti has softened and rinse with water. Re-apply, if necessary. Always pre-test on plastics, coatings and varnishes before use.



Ref.	SIZE
20485	Bulk 5L



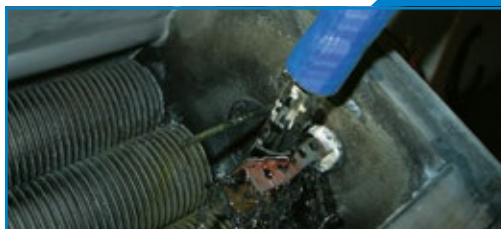
### CRC SCALE REMOVER

Powerful de-scaler.

Cleaner for the removal of deposits of lime scale and rust. Restores and improves surface finish. Suitable for use on most metals and plastics.

**Directions:**

Apply as a concentrate or diluted (up to 1:20) according to the level of scale to be removed.



Ref.	SIZE
20482	Bulk 5L





## CRC TRAFFIC FILM REMOVER

**Heavy-duty vehicle grime cleaner.**

Water based cleaner for the removal of traffic film and general environmental soiling. Can be applied manually with a pressure washer or through automatic washing equipment. Safe for use on most plastics, painted surfaces and car bodies.

**Directions:**

May be used cold or hot. Apply as a concentrate or diluted (1:20 to 1:200) according to the degree of soiling. Rinse with cold water.



Ref.	SIZE
20486	Bulk 5L

## CRC HEAVY DUTY DEGREASER

**Highly concentrated alkaline degreaser.**

Highly concentrated water based detergent degreaser. Quickly removes oil, grease, silicones and heavy grime. Safe for use on most plastics, painted and enamelled surfaces.

**Directions:**

Can be used cold or hot. Apply as a concentrate or diluted (1:6 to 1:40) dependent upon the level of soiling.



Ref.	SIZE
20487	Bulk 5L

## CRC MULTI SURFACE CLEANER

**High solvency detergent cleaner.**

Powerful, water based cleaner and degreaser for multiple cleaning applications. Safe for use on most plastics, painted or enamelled surfaces. May also be used in ultrasonic cleaning equipment.

**Directions:**

Can be used cold or hot. May be applied by hand, brush or immersion. Apply as a concentrate or diluted (1:6 to 1:40) dependent upon the level of soiling.



Ref.	SIZE
20488	Bulk 5L

## CLEANERS - HANDCLEANERS

### CRC HANDCLEANER

Handcleaner for light contaminated hands.

Contains lanolin and is intended to be used without water. Mild solvents and biodegradable surfactants can remove most dirt and grime.

Ref.	SIZE
30650	Tube 150 ml
30651	Bulk 2,5L



### CRC SUPER HANDCLEANER

Handcleaner for heavily contaminated hands.

Contains beside the mild solvents and biodegradable surfactants, also small friction parts from natural sources. Very effective on grease, carbon and most stubborn contaminations.

Ref.	SIZE
30675	Tube 150 ml
30676	Bulk 2,5L



### CRC CITRUS HANDCLEANER

Professional solvent-free hand cleaner with Aloe Vera, Jojoba and an environmentally friendly abrasive. Mild for the skin. Fresh fragrance. Removing easily: lubricants, grease, tar, brake fluids and bitumen.

Ref.	SIZE
32321	Bulk 3,8L



## CRC HAND WIPES

High absorbency cleaning wipes.

Super high absorbency hand wipes layered with an effective polymer web to give all the cleaning power of pumice without the scratching. Highly effective on a range of soiling types adhesives, tar, bitumen, resins, silicone grease, oils, petrochemicals, paints, and more. Cleaner and towel together in one convenient wipe. Contains skin conditioner to replace natural oils removed in cleaning. No contamination from heavy perfumes.



Ref.	SIZE
12006	Bucket: 100 wipes

## CRC WIPES

Multipurpose industrial strength cleaning wipes.

Removes oil, grease, paint, ink and adhesives of different surfaces. The textured side of the wipe will gently but efficiently remove all contamination. The smooth side of the wipe will effectively retain contamination.



Ref.	SIZE
20246	Tub: 50 wipes



# LUBRICANTS

## CUTTING & DRILLING

### CUTTING

 SUPERCUT	 ECO SUPERCUT	 LUB 21
---	---	---

### THREADING

 SUPER TAPPING FLUID	 SUPER TAPPING COMPOUND
--	---

## OILS

### MULTIPURPOSE

 MULTI OIL
---

### PLASTIC SAFE

 SILICONE	 SILICONE
--	--

### GEARS & WIRES

 GEAR & WIRE ROPE LUBE
---

### CHAINS

 CHAIN LUBE
--

### SPINDLES & SLIDES

 SLIDEWAY OIL
---

### METAL

 3-36	 5-56 + PTFE	 POWER LUBE	 ROST FLASH
---	--	---	---

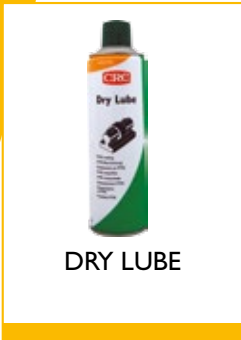
### METAL

 PENETRATING OIL (+ MOS <sub>2</sub> )	 ECO PEN OIL	 PEN OIL
--	--	--



# DRY LUBRICATION

## METAL & PLASTICS



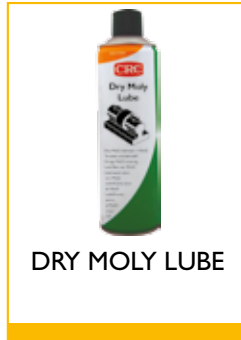
DRY LUBE

## FOOD PROCESSING AREAS



DRY LUBE-F

## HIGH PRESSURE HIGH TEMPERATURE



DRY MOLY LUBE

# MOULD RELEASE

## METAL



GLASS BLANK RELEASE

# GREASES

## MULTI-PURPOSE



MULTI GREASE



FOOD GREASE

## HIGH LOADS



SUPER LT GREASE (+ MOS<sub>2</sub>)

## ADHESIVE



SUPER ADHESIVE GREASE

## HIGH SPEED



HIGH SPEED GREASE

## SILICONE BASED



SILICONE GREASE

## EXTREME PRESSION



WHITE LITHIUM GREASE (PTFE)



EP FOOD GREASE



EXTREME LUBE

## LOW TEMP.



LOW TEMP GREASE

## HIGH TEMPERATURE



HI-TEMP FOOD GREASE



HIGH TEMP GREASE

# PASTES

## METAL BASED



COPPER PASTE

## CERAMIC BASED



METAL FREE PASTE

## ROUGH TREADED AND SLIDING STEEL



ALU PASTE

## ASSEMBLY



ASSEMBLY PASTE



GRAPHITE ASSEMBLY PASTE (+ MOS<sub>2</sub>)

# LUBRICANTS - CUTTING FLUIDS

## CRC SUPERCUT

Low viscous cutting liquid for normal, metal cutting operations.

Non-chlorinated, high performance cutting liquid. Reduces heat created by friction, cools by transferring heat away from cutting tools and removes shavings out of the cutting area. Increases the tool life considerably and protects freshly machined parts from rusting.

Ref.	SIZE
32210	Aerosol 400 ml
30353	Bulk 1L
20457	Bulk 5L
30354	Bulk 20L

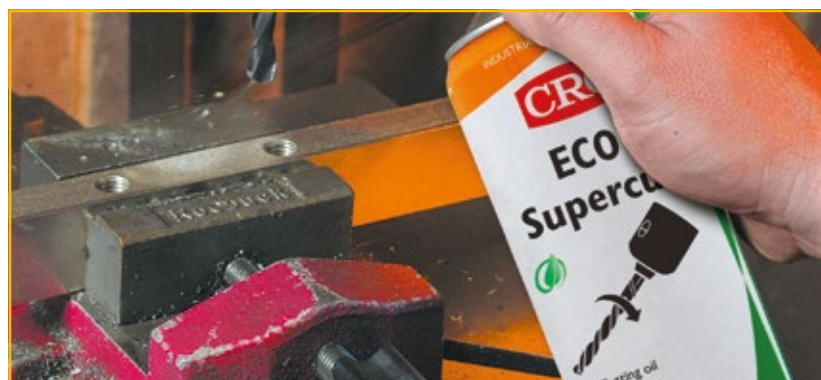


## CRC ECO SUPERCUT

Biodegradable cutting oil.

Natural straight oil, free of chlorine, for cutting operations in ferro, non-ferro and aluminium. Cools by transferring heat away from cutting tools, reduces heat created by friction and removes shavings out of the cutting area. Protects freshly machined parts from rusting and increases the tool life considerably. Readily biodegradable according to OECD 301B: 87%.

Ref.	SIZE
31911	Aerosol 500 ml
31917	Bulk 5L



## CRC SUPER TAPPING FLUID

High viscous cutting liquid for extreme metal cutting operations.

Non-chlorinated, high performance tapping fluid. Designed for high-pressure applications. Reduces heat created by friction, cools by transferring heat away from cutting tools and removes shavings out of the cutting area. Increases the tool life considerably and protects freshly machined parts from rusting.



Ref.	SIZE
30397	Aerosol 300 ml
30398	Bulk 1L
20552	Bulk 5L

## CRC SUPER TAPPING COMPOUND

Specialist metal cutting compound.

CRC Super Tapping Compound is an instant, ready-to-use metal machining compound with excellent high cling and extreme pressure resistance properties. It provides an extreme-pressure resistant, tenacious film between the tool cutting edge and the work piece, ensuring an excellent surface finish and an extended tool life.



Ref.	SIZE
30706	Bulk 500 g

## CRC LUB 21

Semi-synthetic cutting fluid for cutting and rectification operations on all kinds of metals (steel, copper, aluminum, stainless steel, etc. ).

This cutting fluid provides a significant extension of the life time of cutting tools and gives a superb anti-corrosion coating to the machined parts. The cuttings are evacuated more easily. Compared to traditional fluids, CRC LUB 21 has a considerable extended life time.



Ref.	SIZE
20248	Bulk 5L
30405	Bulk 25L
30404	Bulk 200L

# LUBRICANTS - OILS

## CRC 3-36

Light lubricating oil, good penetration for general use.

A universal lubricating oil with excellent penetrating properties. Suitable as multipurpose lubricant for simple applications. Gives also a good corrosion protection for indoor stored parts.

Ref.	SIZE
10106	Aerosol 300 ml
10110	Aerosol 500 ml
10114	Bulk 5L
30362	Bulk 20L
30364	Bulk 200L



## CRC 5-56 + PTFE

Multifunctional service fluid for use in the professional mechanical maintenance.

Contains PTFE for an extended lubrication function under industrial conditions. Performs extremely well when frequent start, stop or alternating movements occur. Displaces moisture and prevents electrical failure. Provides a good protection against corrosion. Ultimate penetration capacity for de-blocking threaded connections or clamped metal surfaces. Cleans and protects surfaces contaminated by machining or handling.

Ref.	SIZE
32354	Aerosol 500 ml



## CRC POWER LUBE

Light lubrication oil with PTFE, for frequent start-up situations.

Superior lubricant for universal use, containing PTFE. Provides a long-lasting protection against wear, friction and corrosion.

Ref.	SIZE
30517	Aerosol 400 ml



## CRC ROST FLASH

Rust loosener with freeze shock effect.

When sprayed onto a rusted nut bolt connection, the rust cools down (-40°C) and cracks, leaving small fissures. The active liquid will rapidly penetrate into those small openings and blocked parts are separated easily. CRC Rost Flash loosens all kinds of threaded parts, hinges and sliding parts. Free of silicones and acids.

Ref.	SIZE
10864	Aerosol 500 ml





**CRC PENETRATING OIL (+ MOS<sub>2</sub>)**

A penetrating oil that quickly frees and lubricates seized mechanisms. Quickly penetrates through corrosion and soil. Frees seized and rusted bolts, nuts and other metal components. Leaves a lubricating MoS<sub>2</sub> film.

Ref.	SIZE
20448	Aerosol 300 ml

**CRC PEN OIL**

A penetrating oil that quickly frees and lubricates seized mechanisms. Quickly penetrates through corrosion and soil. Frees seized and rusted bolts, nuts and other metal components. Leaves a lubricating MoS<sub>2</sub> film.

Ref.	SIZE
20117	Aerosol 400 ml

**CRC ECO PEN OIL**

A biodegradable penetrating oil. Lubricates and frees seized and rusted metal parts (bolts, screws,...). Facilitates dismantling. Penetrates easily through corrosion and soil. Readily biodegradable according OECD 301B: 89%.

Ref.	SIZE
31909	Aerosol 500 ml
31915	Bulk 5L

**CRC SILICONE**

Synthetic lubricating oil, suitable for plastic drives and applications at high temperatures. Superior synthetic lubricant with a premium grade high quality silicone. CRC Industrial Silicone exhibits superior lubrication and temperature/viscosity characteristics. Reduces friction and noise on non-metal parts.

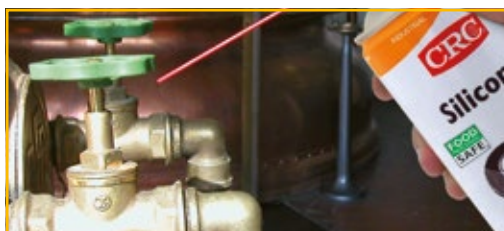


Ref.	SIZE
10526	Aerosol 400 ml
30053	Bulk 5L

**CRC SILICONE (FPS)**

Food Processing Safe, synthetic lubricating oil, suitable for plastic drives and applications at high temperatures.

Superior synthetic lubricant with a premium grade high quality silicone. CRC Silicone exhibits superior lubrication and temperature/viscosity characteristics. NSF H1 registered. It reduces friction and noise on non-metal parts, throughout the food industry.



Ref.	SIZE
31262	Aerosol 500 ml



# LUBRICANTS - OILS

## CRC GEAR & WIRE ROPE LUBE

Heavy-duty Lubricant.

CRC Gear and Wire Rope Lube is formulated to provide protection and lubrication under all operating conditions. The product penetrates deeply for internal protection of open gears, wire ropes, racks and pinions, crown wheels and cams, driving mechanisms in the construction, shipyard, docks and marine, quarrying, heavy engineering, automotive and manufacturing industries.



Ref.	SIZE
10102	Aerosol 400 ml



## CRC SLIDWAY OIL

Low viscosity oil for high speed spindle and slide ways lubrication.

Low viscosity, good affinity to metals, excellent water resistance, reduces stick and slip problems, high load capacity, thin durable lubricating film.

Applications:

Guide rails, adjustment mechanisms, ball-joints, rotating positioning surfaces.



Ref.	SIZE
32146	Aerosol 500 ml



## CRC MULTI OIL

Food Processing Safe, light multipurpose oil for general use.

Extremely efficient and effective general-purpose lubricant, for use in the food industry. CRC Multi Oil is NSF H1 registered, exhibits an excellent penetrating ability and loosens rust, scale, dirt and corrosion.



Ref.	SIZE
10258	Aerosol 400 ml
20157	Bulk 5L



## CRC CHAIN LUBE

Food Processing Safe, heavy lubricating oil for driving and transport chains.

High performance, foaming lubricant, containing PTFE. CRC Chain Lube is compatible with o-rings, highly resistant to splash water and prevents corrosion to occur. The properties and the NSF H1 registration make the product an excellent lubricant for chains in the food industry.



Ref.	SIZE
10267	Aerosol 400 ml
30033	Bulk 5L



## CRC DRY LUBE

**PTFE lubricant for dry lubrication and use on plastic friction points.**

CRC Dry Lube is a fast drying dispersion of white, waxy PTFE particles, leaving a dry lubricating film on the surface. The product exhibits outstanding anti-stick and release properties. As a lubricant, it is most effective at reduced speeds and low loads.



Ref.	SIZE
30519	Aerosol 400 ml

## CRC DRY LUBE-F

**PTFE lubricant for dry lubrication and use in food processing areas.**

Grease- and oil-free lubricant for the lubrication of plastic, rubber or metal surfaces. Clean, dry and not sticky. Temperature resistance up to 250°C. As a lubricant, CRC Dry Lube-F is most effective where low speeds and light loads are involved. Recommended for use as a lubricant in food processing areas where incidental food contact may occur.



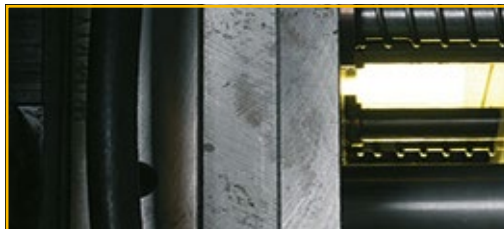
Ref.	SIZE
20343	Aerosol 400 ml



## CRC DRY MOLY LUBE

**High pressure resistant, dry MoS<sub>2</sub> film for metal-to-metal lubrication where a wet film cannot be tolerated.**

High temperature resistance. Reduces stick and slip problems. Displaces and seals out water and moisture. General corrosion protection. Prevents seizing and fretting. Produces a very low coefficient of friction.



Ref.	SIZE
20668	Aerosol 400 ml

## CRC GLASS BLANK RELEASE

Provides an even, clean and durable coating. CRC Glass Blank Release provides a fast curing film at room temperature. Prevents adhesion of ware to the mould. Provides an optimal distribution of the gob in the blank.



Ref.	SIZE
32512	Aerosol 500 ml

# LUBRICANTS - GREASES

## CRC MULTI GREASE

Lithium EP grease for general purpose.  
For use on all common rotative bearings.

Ref.	SIZE
30566	Tube 100 ml
30567	Cartridge 400 g
30568	Bulk 1 kg
30569	Bulk 5 kg



## CRC FOOD GREASE

Multipurpose grease for food processing equipment.

Long-term lubrication on food processing equipment where incidental food contact may occur. CRC Food Grease is NSF H1 registered for use in the food industry and can be applied on all metal constructions used in the food industry: hinges, valves, chains, gears, joints, ...

Ref.	SIZE
20210	Aerosol 400 ml
20158	Cartridge 400 g
10291	Bulk 1 kg
30438	Bulk 20 kg



## CRC EP FOOD GREASE

Bearing grease with PTFE for food processing equipment.

-50°C to +165°C. Provides long-term lubrication with extreme pressure resistance. NLGI classification 2. Protects against corrosion in wet or saturated environments. Excellent extreme pressure performance. Extends lubrication intervals and working life of components. NSF listed for use as a lubricant in food processing areas where incidental food contact may occur.

Ref.	SIZE
20121	Cartridge 400 g



## CRC HITEMP FOOD GREASE

High temperature bearing grease for food processing equipment.

-20°C to +220°C. Provides long-term high temperature. NLGI classification 2. Protects against corrosion in wet environments. Contains PTFE to improve anti-wear performance. Extends lubrication intervals and working life of components. Advised for use as a lubricant in food processing areas where incidental food contact may occur.

Ref.	SIZE
20122	Cartridge 400 g



## CRC HIGH TEMP GREASE

Lithium EP grease for low speed, high load applications with exposure to high temperatures. Recommended on bearings of electric motors.



Ref.	SIZE
30570	Tube 100 ml
30572	Cartridge 400 g
30573	Bulk 1 kg
30574	Bulk 5 kg

## CRC LOW TEMP GREASE

PAO bearing grease for high performance at ultra low temperatures.

Exceptional low running torque. Ideal for smooth, precise movements. Takes up high loads. Excellent water resistance. Deadens vibrations. Safe on most rubbers, plastics and coatings. Test on sensitive or stressed materials before use.

Applications:

Positioning systems, packing lubricant, bearings, railroad equipment, valves.

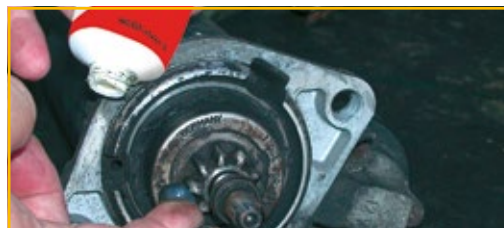


Ref.	SIZE
32144	Aerosol 500 ml

## CRC SUPER LT GREASE (+ MoS<sub>2</sub>)

Lithium EP grease with MoS<sub>2</sub> for low speed, high load applications.

This grease retains its lubricating properties under high surface pressure and impact loads.



Ref.	SIZE
30565	Tube 100 ml
30576	Cartridge 400 g
30578	Bulk 1 kg
30580	Bulk 5 kg

## CRC SUPER ADHESIVE GREASE

Lithium EP grease for low speed, high load applications with occasional exposure to splash water.

When vibrations, oscillating movements and impact loads occur under outdoor conditions. The good sticking property allows vertical or overhead applications.



Ref.	SIZE
30585	Tube 100 ml
30587	Cartridge 400 g
30589	Bulk 1 kg

# LUBRICANTS - GREASES

## CRC HIGH SPEED GREASE

Synthetic lithium complex grease for very high speed applications, even at low temperatures. Designed for applications with a high speed factor. Excellent water resistance. Non corrosive. Very good oxidation stability. Extreme high dn-value. Low start torque. Fast accelerations possible. Enables fast respond times. Allows start ups at extreme low temperatures.

Applications:  
Spindle, linear bearings. Slides, fans, pumps, adjustment mechanisms, assembly of packings.



Ref.	SIZE
32142	Aerosol 500 ml

## CRC SILICONE GREASE

Seals valve seats from an aggressive environment. Allows smooth assembly of elastomeric packing's and seals. CRC Silicone Grease forms a colourless, non-hardening film which eliminates squeaking, binding and sticking. Protects metal, alloys, plastics and rubbers.



Ref.	SIZE
30724	Aerosol 400 ml

## CRC WHITE LITHIUM GREASE (PTFE)

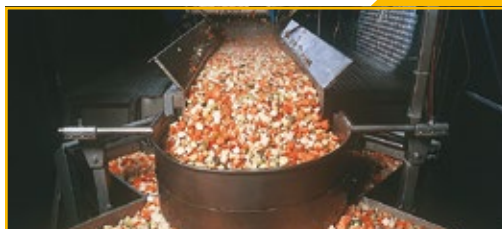
Lithium complex grease with PTFE for low speed and high load applications. A high purity NLGI 2 white, lithium based grease with an advanced additive package including PTFE for superior lubrication. CRC White Lithium Grease has a smooth consistency for optimum surface coverage.



Ref.	SIZE
10477	Aerosol 400 ml

## CRC EXTREME LUBE

High pressure lubricant. Synthetic NLGI 2 grease, highly charged with extreme pressure additives. Highly stable with long service life. Excellent water resistance. Functional over a wide temperature range: -40 °C to 180 °C. Provides long-lasting lubrication. Safe on most rubbers, plastics and coatings. Contains corrosion inhibitor. Very good oxidation stability. Acts like an oil, sets like a grease.



Ref.	SIZE
30087	Aerosol 400 ml
30088	Cartridge 400 g



**CRC COPPER PASTE**

Paste with copper particles for heavy loads at start-up situations. Also acts as anti-seize. Contains micronized copper powder, anti-oxidant and anti-wear additives. Prevents metal-to-metal contact, seizing, galling and fretting corrosion, especially on sliding bearings.

Ref.	SIZE
10693	Aerosol 300 ml
32340	Aerosol 500 ml
10690	Tube 100 ml
10699	Bulk 500 gr



**CRC METAL FREE PASTE**

Ceramic paste for heavy loads and high temperatures during start-up conditions. Also acts as anti-seize. A ceramic separating and mounting paste for applications from -40°C to +1.400°C. Preventing metal-to-metal contact as cause for seizing, galling and fretting corrosion, during heavy start-up conditions or high temperature application.

Ref.	SIZE
10723	Aerosol 300 ml
10720	Tube 100 gr
20706	Bulk 1 kg



**CRC GRAPHITE ASSEMBLY PASTE (+ MOS<sub>2</sub>)**

Assembly paste with solid graphite particles and MoS<sub>2</sub> for easy assembly and smooth start-up situations. Has a good affinity to metals and resists high pressure and elevated temperatures.

Ref.	SIZE
10723	Aerosol 300 ml
10720	Tube 100 gr
20706	Bulk 1 kg



**CRC ASSEMBLY PASTE**

Anti-seize compound for lubrication of bushes, sliding surfaces and small open gears. Prevents damage at start-up and protects during running-in. Protects against seizing of threaded components. Effective from -30°C to +150°C as a lubricant and to +1100°C as an antiseize. Developed for use as a lubricant in food processing areas where incidental food contact may occur.

Ref.	SIZE
20109	Aerosol 400 ml
20120	Tin 500 g






**CRC ALU PASTE**

Assists with assembly of rough treaded parts and sliding steel surfaces. Prevents seizing. Takes up high loads. Supports extreme slow movements. Smoothens rugged surfaces. High temperature resistance. Convenient 360° (including inverted position) spray valve for aerosols. Applications: Rugged thread, guide rails, assembly of rugged parts, sliding surfaces.

Ref.	SIZE
32147	Aerosol 500 ml



## LUBRICANTS - TECHNICAL INFO

PRODUCT	Min. temp. (°C)	Max. temp. (°C)	DN (mm/min)	DIN 51 825
CRC Multi Grease	-30	130	400.000	KP 2 K-30
CRC Super LT Grease (+ MOS <sub>2</sub> )	-30	130	280.000	KPF 2 K-30
CRC Super Adhesive Grease	-30	140	250.000	KP 2 N-30
CRC Low Temp Grease	-50	160	400.000	KP 2 P-50
CRC High Temperature Grease	-30	150	400.000	KP 2 P-30
CRC High Speed Grease	-60	130	1.000.000	KP 2K-60
CRC Food Grease 	-20	140	500.000	K 2 K-20
CRC EP Food Grease 	-50	165	400.000	KP 2 P-50
CRC HiTemp Food Grease 	-20	220	200.000	K 2 U-20
CRC Graphite Assembly Paste (+ MOS <sub>2</sub> )	-30	650	-	-
CRC Alu Paste	-25	650	-	-







**Attention !** the regulations have changed, so has your label !

**What?**

- Changes in terminology, labelling & classification:

**OLD:**  
Symbols



**NEW:**  
Pictograms



Risk Phrases



Hazard Statements

Safety Phrases

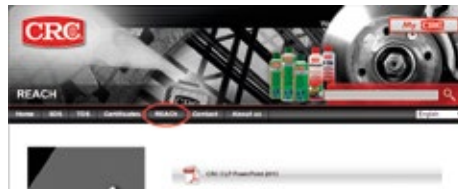


Precautionary Statements

**Why?**

- EU regulation (1272/2008): implementation of GHS
- GHS = Globally Harmonised System of Classification and Labelling of Chemicals.
- For more info check out our new website And go to the REACH tab:

[www.crcind.com](http://www.crcind.com)



**When?**

- Today: CRC has already started with the implementation, so you may already find some new CLP labels.
- 1st June 2015: Labelling deadline for mixtures.
- Till 1st June 2017: no need to re-label mixtures on the market (in stock/ in use).

**NEW:**

Signal word “**Danger**” or “**Warning**”

**New pictograms on CRC products**  
**HAZARD CLASS**



- Flammable aerosols
- Flammable liquids



- Toxic to aquatic life



- Corrosive for skin and/or eyes
- Corrosive for metals



- Harmful if inhaled, if swallowed, if in contact with skin
- Can cause irritation to the skin, eyes or airways
- Can cause drowsiness or dizziness
- May cause an allergic skin reaction



- Aspiration hazard

# LUBRICANTS - BULK OILS

## OIL PROPERTIES WHICH DETERMINE THE OIL'S FIELD OF USAGE

- **Viscosity**  
A measure of a fluid's resistance to flow.
- **Viscosity index (VI)**  
Relationship of viscosity in function of temperature.
- **Pour point (PP)**  
The lowest temperature at which a fluid still can be pumped.
- **Film strength**  
The measurement of a lubricant's ability to keep an unbroken film during operation (load conditions.warm running water:

	Mineral Oil (CRC FPS Lub Oil)	PAO Oil (CRC FPS Lub Oil PAO)
<b>Viscosity Index (VI)</b>	+	++
<b>Aging</b>	+	++
<b>Pour point (PP)</b>	-	+++
<b>Wear protection</b>	+	++



## GEARBOX OILS

Definition of transmission / gearbox

**A transmission or gearbox provides speed and torque conversions from a rotating power source to another device using gear ratios.**

### DEMANDS ON GEARBOX OILS:

- Thermal and oxidative stability.
- Compatibility with sealing materials.
- Protection against excessive gear and bearing wear.
- High-temperature and extreme pressure protection (EP gear oils).
- Gear and bearing cleanliness.
- Emulsibility characteristics.
- Rust and corrosion protection, especially to yellow metal components.
- Antifoaming characteristics.

### CHOOSING A GEARBOX OIL

Synthetic lubricants are conventionally reserved for equipment subjected to:

- Extreme high or low temperatures.
- Frequent high loading.
- Extended service intervals.

➔ Gearbox oils based on PAO

**CRC LUB OIL PAO 150** (ISO VG 150) \* ➔ VI = 137 / PP = -56 °C

**CRC LUB OIL PAO 220** (ISO VG 220) \* ➔ VI = 140 / PP = -51 °C

**CRC LUB OIL PAO 320** (ISO VG 320) \* ➔ VI = 142 / PP = -48 °C

### ADVANTAGES:

- NSF H1: General lubricant / Incidental food contact.
- EP additives.
- Antifoaming characteristics.
- Antioxidant.
- Good anti-corrosion properties.
- Safe on most rubbers.



Ref.	SIZE
20639	Lub oil PAO 150 Bulk 5L
20638	Lub oil PAO 150 Bulk 20L
20641	Lub oil PAO 220 Bulk 5L
20640	Lub oil PAO 220 Bulk 20L
20645	Lub oil PAO 320 Bulk 5L
20644	Lub oil PAO 320 Bulk 20L

\* Consult the equipment manual / specifications to select the correct lubricant viscosity grade (ISO VG).

## HYDRAULIC OILS

Definition of hydraulic oil

**Hydraulic oil (fluid / liquid) is a medium by which power is transferred in hydraulic machinery.**

### DEMANDS ON HYDRAULIC OILS:

- Adequate viscosity (pump & sealing).
- No compressability.
- Low foaming.
- Low temperature fluidity.
- High viscosity index (VI).
- Fast air release.
- Good thermal capacity.
- Corrosion control.

### CHOOSING A HYDRAULIC OIL

**Modern hydraulics use smaller pumps and higher actuator speeds, resulting in:**

- High flow rates and higher temperatures.
  - Higher temperature = faster oxidation.
  - Short retention time.
  - Asks for fast water and air separation.
- **DIN 51524/T2 for hydraulic fluid**

**CRC LUB OIL PAO 32 (ISO VG 32) \* → VI = 142 / PP = -57 °C**

**CRC LUB OIL PAO 46 (ISO VG 46) \* → VI = 145 / PP = -57 °C**

**CRC LUB OIL PAO 68 (ISO VG 68) \* → VI = 141 / PP = -57 °C**

### ADVANTAGES:

- NSF H1: General lubricant / Incidental food contact.
- Superior antifoam capacity.
- Good deaeration .
- Excellent water demulsifying properties.
- Contains corrosion inhibitor.
- Provides long lasting lubrication.
- Low pour point (-57 °C).

## LUBRICATION OILS

### DEMANDS ON GEARBOX OILS:

- Transfer heat.
- Protect against wear.
- Protect against corrosion.
- Keep engines clean.
- Sealing properties.

### WHEN TO USE MINERAL OILS FOR MACHINE LUBRICATION?

- Indoor machine operation.
- Focus on general lubrication and protection.
- No extreme temperature fluctuations.
- No extreme low temperatures (below -21°C).

**CRC LUB OIL 32 (ISO VG 32) \* → VI = 105 / PP = -21 °C**

**CRC LUB OIL 46 (ISO VG 46) \* → VI = 105 / PP = -21 °C**

### ADVANTAGES:

- NSF H1: General lubricant / Incidental food contact.
- Superior antifoam properties.
- Good deaeration.
- Contains corrosion inhibitor.
- Excellent water demulsifying characteristics.



Ref.	SIZE
20643	Lub oil PAO 32 Bulk 5L
20642	Lub oil PAO 32 Bulk 20L
20647	Lub oil PAO 46 Bulk 5L
20646	Lub oil PAO 46 Bulk 20L
20649	Lub oil PAO 68 Bulk 5L
20648	Lub oil PAO 68 Bulk 20L



Ref.	SIZE
20635	Lub oil 32 Bulk 5L
20634	Lub oil 32 Bulk 20L
20637	Lub oil 46 Bulk 5L
20636	Lub oil 32 Bulk 20L

# ANTI-CORROSION

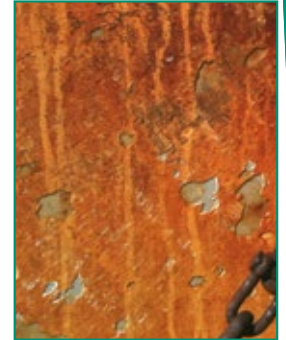
## TEMPORARY PROTECTION

### INDOOR STORAGE

 <b>3-36</b> Up to 6 months	  <b>SP 350</b> Up to 2 years
--	--






### OUTDOOR STORAGE

 <b>SP 350</b> Up to 1 year Covered conditions	 <b>SP 400</b> Up to 2 years
--	---



## LONG-TERM PROTECTION

### COATINGS

 <b>ZINC PRIMER</b> Primer	 <b>GALVA BRITE</b> Aluminum aspect	 <b>GALVA SHINE</b> Exceptional gloss	 <b>INOX 200</b> Inox aspect	 <b>ALU HITEMP</b> High temperature
--	---	---	--	---

### COATINGS

 <b>URETHANE ISOLATION</b> Electronic parts	 <b>GALVACOLOR</b>
--	--

### CATHODIC PROTECTION

 <b>ZINC</b>
--

## RUST TREATMENT

### CONVERTER

 <b>RUST CONVERTER</b>
--

### REMOVER

 <b>RUST REMOVER</b>	 <b>FERROKLEEN PRO</b>
--	--



## CRC 3-36

**Short-term corrosion inhibitor. Indoor protection up to 6 months.**

Multipurpose corrosion inhibitor with water repellent and lubricating properties. Forms a thin, almost invisible and long-lasting protective film against water and oxygen. Exceptional penetrating properties, allowing the product to work even into the smallest pores and cracks. CRC 3-36 protects metal parts from corrosion when stored indoors, during a shorter period.

Ref.	SIZE
10106	Aerosol 300 ml
10110	Aerosol 500 ml
10114	Bulk 5L
30362	Bulk 20L
30364	Bulk 200L



## CRC SP 350

**Long-term corrosion inhibitor.**

Indoor protection up to 2 years. Outdoor protection when covered, up to 1 year.

Highly viscous protective oil. Forms a thin penetrating protective film, which does not dry. Protects against moisture and corrosive vapors. Displaces moisture and does not drip off. Covers both smooth surfaces and sharp edges. Provides a relatively long corrosion protection. Do not store the protected parts in outdoor and uncovered conditions.

Ref.	SIZE
30406	Aerosol 300 ml
20294	Bulk 5L
30407	Bulk 20L

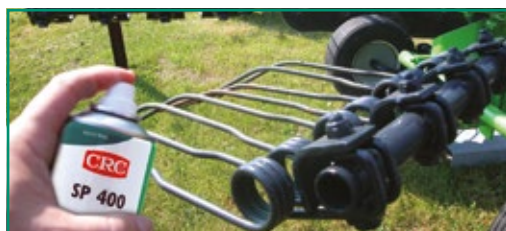


## CRC SP 400

**Long-term outdoor, corrosion inhibitor.**

Outdoor protection up to 2 years. Waxy corrosion protector. Provides an effective corrosion protection in outdoor conditions, for a long period. The waxy protective film does not become brittle and protects against heavy corrosive circumstances as moisture and salt water.

Ref.	SIZE
30400	Aerosol 300 ml
32350	Aerosol 500 ml
20324	Bulk 5L
20327	Bulk 20L
30402	Bulk 200L



# ANTI-CORROSION - LONG-TERM

## CRC ZINC

Cathodic protection, even for damaged galvanised parts.

Zinc based coating with excellent adhesion to metal surfaces. The high zinc content is sacrificed during the corrosion process and so provides a galvanic protection of the treated metal. The dry coating contains a maximum amount of zinc (purity 98%), ensuring a self-healing effect when the coating gets scratched. The dry coating is matt and has an excellent surface structure to be painted.

Ref.	SIZE
30563	Aerosol 500 ml
30564	Bulk 750 ml

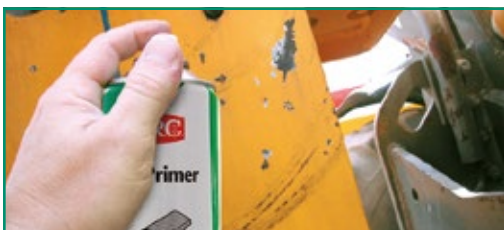


## CRC ZINC PRIMER

Corrosion protective primer, easy to paint over.

A Zinc-Phosphate primer for metal surfaces. Dries quickly. Improves adhesion of the finishing coating. A corrosion protective additive slows down corrosion. Can be painted over with all kinds of single component paints, already after one hour.

Ref.	SIZE
30419	Aerosol 500 ml



## CRC GALVA BRITE

Protective, final coating with a shiny aluminum aspect.

A single component Zinc-Aluminum coating. Protects against corrosion and forms a glossy aluminum look on the coated surface. Good adhesion to metal surfaces. Results in a unique combination of flexibility and hardness.

Ref.	SIZE
30423	Aerosol 500 ml



## CRC GALVA SHINE

Touch-up paint for hot galvanised pieces.

Protective coating with an exceptional gloss. Gives the work piece the aspect of a freshly hot galvanised piece. The film is very resistant and keeps its brilliance in time. Ideal paint for touch-ups of freshly galvanised pieces. The paint can also be used to give pieces a new zinc look



Ref.	SIZE
32319	Aerosol 500 ml

## CRC INOX 200

Anti-corrosion coating for stainless steel surfaces.

Coating with good anti-corrosion properties and a nice look, identical to stainless steel (inox). The coating is fast drying, resistant to high temperatures and has excellent adhesion properties. Ideal touch-up paint : to be used after welding or when mounting a stainless steel construction. Will cover and protect discolored welding seams.

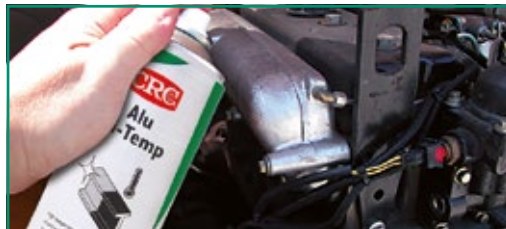


Ref.	SIZE
32337	Aerosol 500 ml

## CRC ALU HITEMP

Protective coating with aluminum look.

Resists high temperatures. Paint that resists high peak temperatures up to 600°C. Provides a hard and durable surface, which does not burn, crack or scale down, even at high temperatures. Withstands large fluctuations in temperature. Excellent weather resistance.



Ref.	SIZE
32421	Aerosol 500 ml

## CRC URETHANE ISOLATION

Protective, urethane based varnish for electronic components.

Clear transparent or red colored one-component, urethane type coating. Urethane coating seals out water and moisture and acts as a barrier for contaminants. The coating dries fast and adheres well to most surfaces. After curing, the protective film has a high flexibility, is durable and resists abrasion and contamination.



Ref.	SIZE
10628	Aerosol 300 ml Clear
10630	Bulk 4L Clear
10639	Aerosol 300 ml Red
10641	Bulk 4L Red

# ANTI-CORROSION - LONG-TERM

## CRC GALVACOLOR

Aerosol paint that protects the metal from corroding.

Zinc-phosphate protective coating. Ideal for identification of utility conduits. Primer and topcoat in one. Short drying time. Official RAL identification colors. Conform to the protect category C3 (ISO 12944-2).

Ref.	SIZE	COLOR	RAL
20563	Aerosol 500 ml	Yellow	1004
32170	Aerosol 500 ml	Orange	2011
20566	Aerosol 500 ml	Red	3000
20572	Aerosol 500 ml	Blue	5012
20575	Aerosol 500 ml	Green	6010
20581	Aerosol 500 ml	Black	9005
20584	Aerosol 500 ml	Silver	9006
20587	Aerosol 500 ml	White	9010

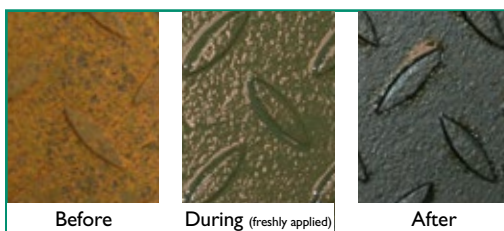


## CRC RUST CONVERTER

Rapidly converts rust into a tough, protective surface.

Transforms the rust layer into a durable coating. Forms a tough barrier against corrosion. The final black coating forms a natural protection for the valuable steel structure. Easy and ready to use - not necessary to paint afterwards. Applicable with a normal paint brush. Immediate results; visible within 5 minutes (depending circumstances). Water based product. Contains zinc pigments. Can be over-painted with esthetic top coat e.g. CRC Galvacolor.

Ref.	SIZE
30067	Bulk 750 ml

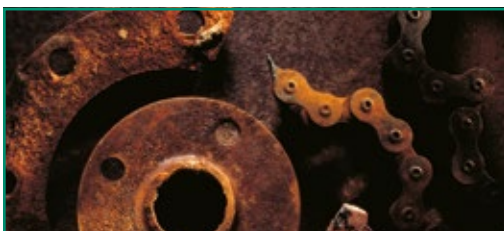


## CRC RUST REMOVER

Removes corrosion and/or rust from metals.

CRC Rust Remover is a concentrated scale and rust remover. Based on acid, it removes rust and cleans metal surfaces from scale, tarnish, oxidation and stains.

Ref.	SIZE
30610	Bottle 250 ml
10752	Bulk 5L
30611	Bulk 20L

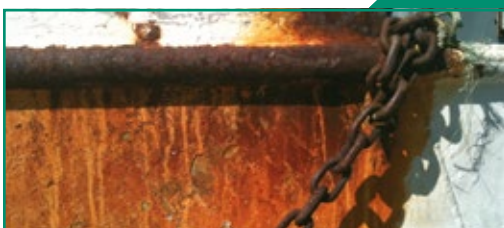


## CRC FERROKLEEN PRO

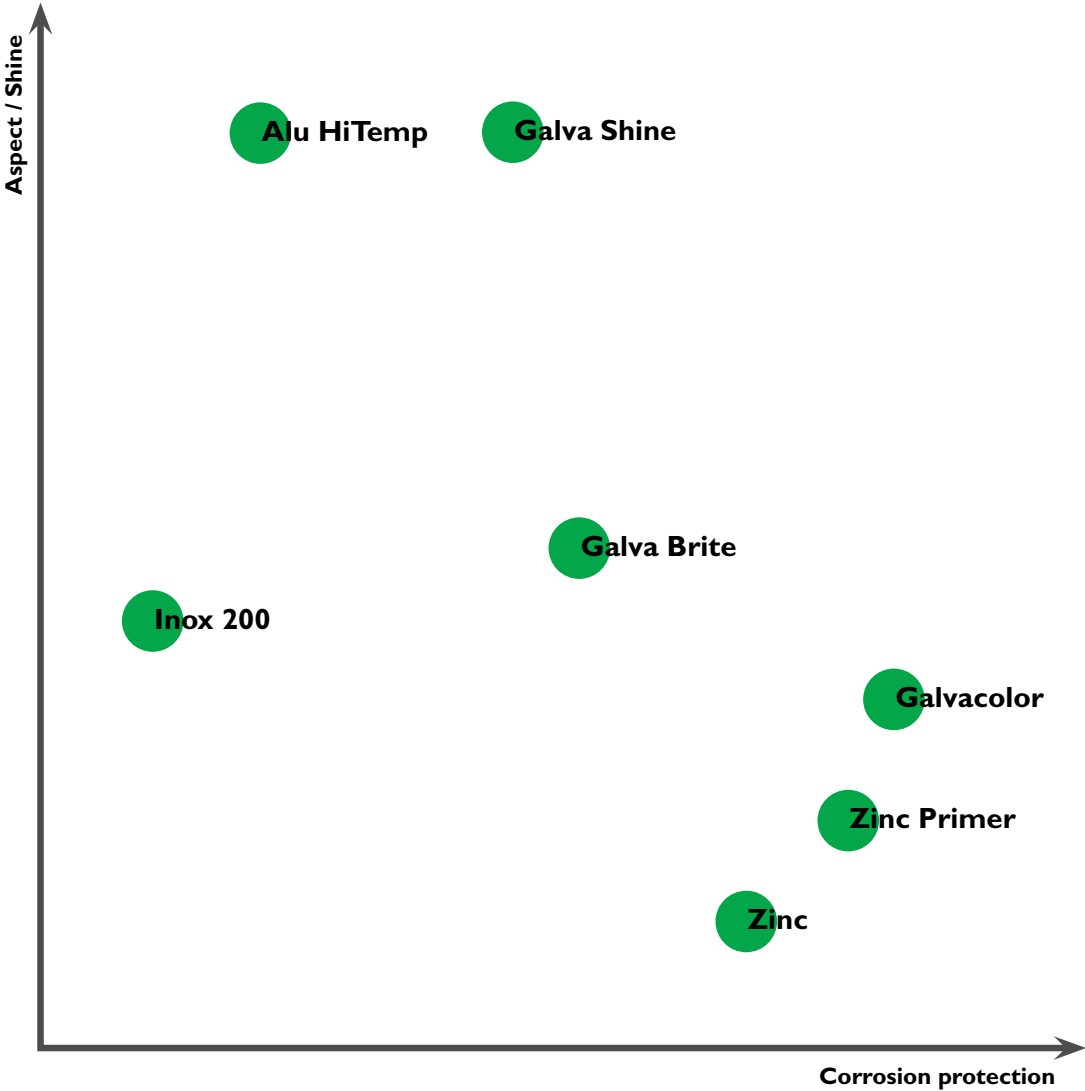
Cleans painted and bare metal surfaces contaminated with rust, lime, algae, oils and tar.

Takes rust and rust stains on painted or plastic surfaces away. Effective against a wide range of scales. Non flammable. Slightly foaming. Composed of > 90% anorganic components and biodegradable organic components. Not classified as dangerous for the aquatic environment.

Ref.	SIZE
30089	Bulk 5 kg
30199	Bulk 20 kg










# PAINTS - MARKING & IDENTIFICATION



## MARKING AND SIGNALISATION

### TEMPORARY

 <p><b>MARKER PAINT</b> Multi position</p>	 <p><b>AQUA PAINT MARKER</b> Multi position</p>	 <p><b>VERTICAL MARKER</b> Multi position</p>
---	--	--



### PERMANENT

 <p><b>STRIPING PAINT</b> Horizontal areas</p>	 <p><b>AQUA STRIPING PAINT</b> Horizontal areas</p>	 <p><b>MARKER PEN</b> Precision</p>	 <p><b>AQUA MARKER PEN</b> Precision</p>	 <p><b>MARKER BALL</b> Precision</p>	 <p><b>SOLID MARKER</b> Precision</p>
---	--	--	---	---	--

## OTHER

### RAL PAINTS

 <p><b>ACRYL RAL PAINT</b></p>	 <p><b>AQUA RAL PAINT</b></p>
---	--

### CORROSION PROTECTION

 <p><b>GALVACOLOR</b></p>
--

## ACCESSORIES

### MARKER PAINT APPLICATOR STICK


<p>Ref. 11508</p>

### STRIPING PAINT MACHINE


<p>Ref. 11507</p>



## CRC MARKER PAINT

Special multi position paint for manual marking and signaling.

A fast drying paint, formulated for temporary signaling and marking jobs for all types of outdoor works. CRC Marker Paint can be used in all positions, no need to purge after use. Due to the special resin the product has a very good adherence to any type of substrate (asphalt, rock, concrete, wood, ...), even under severe weather conditions (humidity, cold,...). The special formula ensures a good (fluorescent) aspect over light and dark areas.



Ref.	SIZE	COLOR
10158	Aerosol 500 ml	Fluo Yellow
10165	Aerosol 500 ml	Fluo Orange
10155	Aerosol 500 ml	Fluo Red
10167	Aerosol 500 ml	Fluo Violet
10160	Aerosol 500 ml	Fluo Blue
10157	Aerosol 500 ml	Fluo Green
10163	Aerosol 500 ml	Fluo Fuchsia
10164	Aerosol 500 ml	Fluo Black
10154	Aerosol 500 ml	Yellow
10162	Aerosol 500 ml	White



## CRC AQUA PAINT MARKER

Water based paint for manual marking and signaling.

A special water based paint formulated for signaling and marking jobs for all types of outdoor and indoor works. Due to the special resin the product has a very good adherence to any type of substrate (asphalt, rock, ground, concrete), even under severe weather conditions (humidity, cold,...). The special formula ensures a good (fluorescent) aspect over light and dark areas. Ecological paint.



Ref.	SIZE	COLOR
30010	Aerosol 500 ml	Fluo Yellow
30011	Aerosol 500 ml	Fluo Orange
30009	Aerosol 500 ml	Fluo Red
30013	Aerosol 500 ml	Fluo Blue
30012	Aerosol 500 ml	Fluo Green
30014	Aerosol 500 ml	White



## VERTICAL MARKER

High (weather and wear) resisting marking paint.

To identify levels, topographic points, trees, pallets, boxes, props, tubes,... Its special fine spray pattern allows also writing and fine markings. The thixotropic paint does not drip off and makes even upwards marking on vertical surfaces possible. Ecological paint.









Ref.	SIZE	COLOR
11709	Aerosol 500 ml	Fluo Yellow
11716	Aerosol 500 ml	Fluo Orange
11705	Aerosol 500 ml	Fluo Red
11713	Aerosol 500 ml	Fluo Fuchsia
11711	Aerosol 500 ml	Fluo Blue
11707	Aerosol 500 ml	Fluo Green
11714	Aerosol 500 ml	Black



# PAINTS - MARKING & IDENTIFICATION

## CRC STRIPING PAINT







Special paint for line marking. CRC Striping Paint is especially developed to trace lines either indoors or outdoors. The chosen resins offer a high resistance to wear and extreme bad weather conditions. Equal and precise line tracing and long lasting coverage over flat surfaces.

Ref.	SIZE	COLOR	
11671	Aerosol 500 ml		Yellow
11675	Aerosol 500 ml		Red
11676	Aerosol 500 ml		Blue
11677	Aerosol 500 ml		Green
11673	Aerosol 500 ml		Black
11668	Aerosol 500 ml		White



## CRC AQUA STRIPING PAINT

Waterbased line marker. Environmentally friendly, water based, permanent line marking paint. High resistance against abrasion. Precise application. conditions or high temperature application.










Ref.	SIZE	COLOR	
31901	Aerosol 500 ml		Yellow
31902	Aerosol 500 ml		Red
31903	Aerosol 500 ml		Blue
31904	Aerosol 500 ml		Green
31900	Aerosol 500 ml		Black
31899	Aerosol 500 ml		White



## CRC MARKER PEN

Marker Pens for multi surface use.






Excellent coverage thanks to the use of correction fluid technology. Can be used on wood, metal, rubber, glass, textile, paper, enamel, plastic, cardboard, tiles, ... Easy and clean application.

Ref.	SIZE	COLOR	
20400	Pen		Yellow
20384	Pen		Orange
20388	Pen		Red
30211	Pen		Violet
20369	Pen		Blue
20380	Pen		Green
30210	Pen		Brown
20365	Pen		Black
20395	Pen		White



## CRC AQUA MARKER PEN

Waterbased Marker Pens for multi surface use. Xylene free.







Ref.	SIZE	COLOR	
32469	Pen		Yellow
32467	Pen		Red
32468	Pen		Blue
32466	Pen		Black
32465	Pen		White



## CRC MARKER BALL

Indelible paint. Industrial use only.

Tip with steel ball. For all types of surfaces. Functions on wet, oily, greasy and rusted surfaces. UV resistant. Excellent water resistance. Functional over a wide temperature range.


Ref.	SIZE	COLOR	
30160	Tube		Yellow
30161	Tube		Red
30163	Tube		Blue
30162	Tube		Green
30159	Tube		Black
30158	Tube		White



## CRC SOLID MARKER

Solid Marker, enabling a permanent marking on all surfaces in all conditions.

Ideal to use on rough surfaces. Functions on wet, oily, greasy and rusted surfaces. UV resistant. Excellent water resistance. Functional over a wide temperature range.

Ref.	SIZE	COLOR	
30156	Stick		Yellow
30157	Stick		White



**CRC ACRYL RAL**

An acrylic based paint.

Fast drying. Excellent flexibility. Once the paint is polymerized, it has a high UV resistance. Good adhesion on metal, wood, glass, paint-able plastics, concrete, stone. Does not contain any heavy metals. Good covering ability. Long lasting, intensive shine. Available in a wide variety of RAL colors.

Ref.	SIZE	COLOR	RAL
-	Aerosol 400 ml	Over 70 colors	-



**CRC AQUA RAL**

Environmentally friendly, acrylic based paint with an optimized use of water as solvent.

Fast drying paint with good flexibility. High UV resistance once the paint is polymerized. Good adhesion on stone, concrete, wood, glass, paint-able plastics and metal. Good covering ability. Does not contain any heavy metals. Long lasting, intensive shine. Available in several RAL colors.

Ref.	SIZE	COLOR	RAL
-	Aerosol 400 ml	Over 20 colors	-



**CRC GALVACOLOR**

Aerosol paint that protects the metal from corroding.

Zinc-phosphate protective coating. Ideal for identification of utility conduits. Primer and topcoat in one. Short drying time. Official RAL identification colors. Conform to the protect category C3 (ISO 12944-2).

Ref.	SIZE	COLOR	RAL
20563	Aerosol 500 ml	Yellow	1004
32170	Aerosol 500 ml	Orange	2011
20566	Aerosol 500 ml	Red	3000
20572	Aerosol 500 ml	Blue	5012
20575	Aerosol 500 ml	Green	6010
20581	Aerosol 500 ml	Black	9005
20584	Aerosol 500 ml	Silver	9006
20587	Aerosol 500 ml	White	9010



# SPECIALTY

## CRC 2-26

**Repels any humidity left after water damage, protects against friction and corrosion.**

CRC 2-26 is a multipurpose lubricant, preventing electric and electronic malfunction due to water penetration, humidity, condensation or corrosion. Displaces water, cleans, removes current leaks, lubricates and protects.

Ref.	SIZE
30345	Aerosol 200 ml
30348	Aerosol 500 ml
10089	Bulk 5L
10093	Bulk 20L
30350	Bulk 200L



## CRC BELT GRIP

**Adhesive belt lubricant.**

Water resistant. Aids transmission efficiency and gives extra pulling power. Stops slipping and squeaking. Designed for use in food processing areas where incidental food contact may occur. Prevents slip on all kinds of belts, except toothed belts. CRC Belt Grip increases the transmission of power between belts and pulley. Gives an improved traction and allows running in at reduced belt tension.

Ref.	SIZE
20137	Aerosol 400 ml

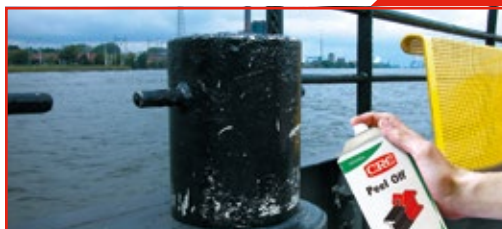


## CRC PEEL OFF

**Protective Varnish.**

Red color. Easy to remove, CRC Peel Off will form a protective flexible coating. The homogeneous and non-porous thin film will protect pieces against humidity, corrosion and other weather influences. Ideal for intermediate protection during transport or periods of inactivity. It can also be used to protect paint cabinets. The film can easily and rapidly be removed just by peeling off (without the use of solvents).

Ref.	SIZE
20240	Aerosol 500 ml
20491	Bulk 5L



**CRC ECO LEAK FINDER**

**Allows detecting leaks in gas conducts and installations.**

Water based detector for gasses. Meets the requirements of EN 14291 and DVGW (Deutsche Vereinigung des Gas- und Wasserfaches) registration number NG-5170AS0069. CRC Leak Finder detects gas leaks in pressurized pipe work and pressurized systems. At the location of a gas leak, it forms highly visible bubbles. Biodegradable according to OECD 301B: 31%.

Ref.	SIZE
10732	Aerosol 500 ml
30058	Bulk 5L



**CRC MINUS 50**

**Inert, non-flammable coolant.**

Strong non-flammable inert dry coolant, down to -50°C, for electrical and electronic maintenance. CRC Minus 50 can be used for maintenance, fault detecting and repairs in the electric and electronic field.

Ref.	SIZE
30720	Aerosol 200 ml

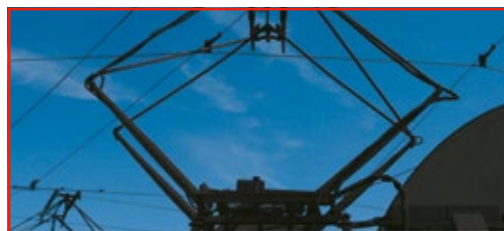


**CRC ROM 300**

**Aqueous based protection for pantographs.**

An aqueous based semi-permanent protective film to prevent the formation of ice and the accumulation of snow on pantographs. Directions: Apply to the surface to be treated. Allow to dry completely prior to operation.

Ref.	SIZE
30056	Bulk 5L



**CRC SMOKE TEST**

**Conveniently tests the functional ability of a smoke detector.**

Can be sprayed while standing on the floor eliminating the need to climb ladders or chairs. Ideal for residential or commercial detectors and is safe and easy to use. A short 3 second burst of the tester is all it takes. In addition, the tester checks for obstructions or debris which clog detector vents and prevent smoke from properly entering the sensing chamber. This important safety test is not accomplished by pushing a test button.

Ref.	SIZE
32472	Aerosol 300 ml



# WELDING

## SPATTER RELEASE

**SOLVENT BASED  
NON-FLAMMABLE**



**SOLVENT  
BASED**



**WATER  
BASED**



**PASTE**



## CLEANERS

**PICKLING PASTE**



## NON-DESTRUCTIVE TESTING (NDT)

**SOLVENT  
CLEANER**



**PENETRATING  
COLORANT**



**DEVELOPER**





## CRC ANTI-SPATTER PRODUCTS

Ensure an easy removal of spatter on metal surfaces and protect the area around the welding seam from spatter.

CRC anti-spatter products also prevent the obstruction of the nozzle of automatic and semi-automatic welding equipment, thus ensuring a free gas flow and a free supply of welding material.

### CRC ANTI SPATTER

Non-flammable, solvent based anti spatter, for use on site.

Does not affect post welding operations. No silicones or flammable solvents. Anti-Spatter film is easily wiped away.

Ref.	SIZE
11052	Aerosol 400 ml
11055	Bulk 5L
30733	Bulk 20L



### CRC EASY WELD

Economic anti spatter, for use in the workshop.

Provides a quick, easy way to prevent adherence of spatter to metal surfaces, and eliminates the need for chiselling, grinding or wire brushing after welding. Economical in use due to its thin film performance. Non-silicone, heat resistant barrier.

Ref.	SIZE
30738	Aerosol 500 ml



### CRC ECO BIO WELD

Non-flammable water based anti spatter, ideal when galvanising will be performed afterwards.

Readily biodegradable according to OECD 301B: 68% (Bulk, 74%). Odourless, non-flammable and safe in use. Fine spray pattern ensures total control and economical coverage. Allows post welding operations, painting, plating, galvanising etc to be undertaken without interference. Contains a rust inhibiting agent.

Ref.	SIZE
31913	Aerosol 500 ml



### CRC ANTI SPATTER PASTE

Pasty anti spatter for protection of the welding torch.

Prevents the build-up of welding material on the torch.

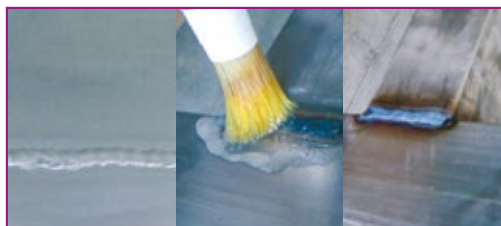
Ref.	SIZE
10747	Tin 500 ml



### CRC INOX WELD KLEEN

Restores the original characteristics of Stainless Steel after welding.

CRC Inox Weld Kleen is a pickling paste that restores the original characteristics of stainless steel after welding or heat treatment. Degreasing, cleaning, pickling and passivating of austenitic and duplex stainless steel 303, 304, 316,..., nickel and aluminum. Fast-working, very efficient, economical and practical to use.



Ref.	SIZE
30379	Bulk 2 Kg

# WELDING - NON-DESTRUCTIVE TESTING

The CRC Crick system detects in a quick and reliable way, small cracks or failures in welding seams, without expensive equipment or destructive testing. (NDT - Non-destructive testing)

## CRC CRICK 110

Solvent cleaner to prepare the surface for examination.

A fast drying cleaner for the removal of all kinds of contaminants on the surface to be inspected. Serves as a preparation of the surface before inspection with liquid penetrant.



Ref.	SIZE
30723	Aerosol 500 ml



## CRC CRICK 120

Penetrating colorant to mark the cracks and failures.

Red colored, water washable penetrant for non-destructive testing of metal surfaces. The penetrant can flow into tiny cracks within a time frame of 10 to 20 minutes. The excess of penetrant has to be washed away before using the developer.



Ref.	SIZE
30205	Aerosol 500 ml



## CRC CRICK 130

Developer to make the marked cracks and failures visible.

Magnifies and makes each trace of Crick 120 visible after the developer has been applied, for at least 7 minutes. Post cleaning of the inspected area can be done with Crick 110. Easily removable.



Ref.	SIZE
20790	Aerosol 500 ml



## 1. CLEANING OF THE SURFACE

The surface to be checked must be clean, degreased and dry. All soiling like rust, oil, grease, paint, ... which can mask the imperfections must be removed. Finish the cleaning by spraying **CRC Crick 110** generously. If possible wipe with an absorbent cloth and allow to dry thoroughly.

## 2. PENETRANT

Shake the can of **CRC Crick 120** prior to use. Spray the penetrant in a light, even film on the surface, wetting all areas to be controlled. Allow to drain for 10 to 20 minutes.

## 3. EXCESS PENETRANT REMOVAL

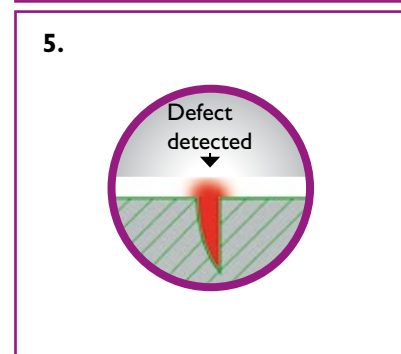
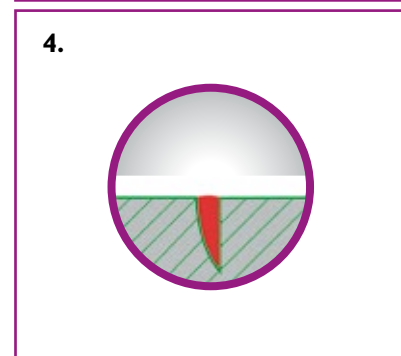
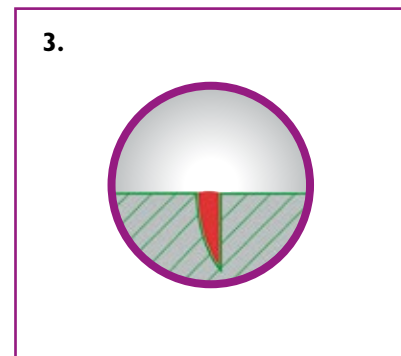
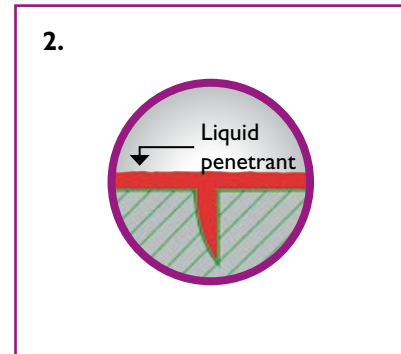
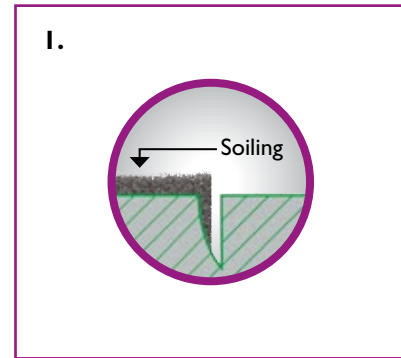
Remove excess of penetrant by wiping the surface using a lint-free cloth. Apply **CRC Crick 110** or water (**CRC Crick 120** is water washable) until all visible, colored traces are removed. Care must be taken that only disturbing penetrant on the surface is removed. Dry properly.

## 4. DEVELOPMENT

Shake the can of **CRC Crick 130** thoroughly prior to use. Spray a light, homogeneous coating of developer from a distance of about 20 cm. Avoid any excess of developer to avoid masking the finest flaws. Allow to develop for at least 7 minutes so that imperfections are visible.

## 5. VISUAL INSPECTION OF DEFECTS • DETECTS CRACKS OF 20 µm!

As time passes, the defects appear as red spots or lines on a white background. The speed of appearance, the shape and dimensions can give information on the nature of the defects. If necessary, post-clean the controlled surface and protect against corrosion with one of CRC's corrosion protection products.



# ADHESIVES - LOCKING / SEALING

## CRC SOFT LOCK

Dismountable locker for threaded metal connections.

A blue colored medium strength anaerobic adhesive. CRC Soft Lock is used to lock those threaded connections that will have to be dismantled in the future, by use of normal tools and without damaging the parts or fittings. Recommended for use on threaded connections from M5 till M16.

Ref.	SIZE
30696	Bottle 50 ml



Temporary

## CRC EXTRA LOCK

Permanent locker for threaded metal connections and fixation of bearings.

A green colored high strength anaerobic adhesive. CRC Extra Lock is used to lock those threaded connections that need a certain fixation and may not loosen during operation. CRC Extra Lock is also suitable for locking bearings and axes. Recommended for use on threaded connections from M5 till M16, as well as on bearings and bushings.

Ref.	SIZE
30697	Bottle 50 ml



Permanent

## CRC EASY SEAL

Liquid seal for threaded metal couplings.

A white colored low strength anaerobic adhesive, used to seal threaded connections in hydraulic or pneumatic installations, as well as threaded connections in the plumbing business. The position of components can be adjusted during an extended period, even under low pressure. Recommended for use till 3" BSP connections.

Ref.	SIZE
30698	Squeeze Bottle 50 ml



Thread

## CRC RIGID SEAL

Liquid seal for machined metal flanges.

An orange colored high strength anaerobic adhesive. CRC Rigid Seal is used to seal stiff, machined metal flanges that are used in industrial piping, engine covers, gearbox covers and hydraulic or pneumatic installations. Excess of material can be wiped off with a dry cloth or is dissolved in oil.

Ref.	SIZE
30699	Squeeze Bottle 50 ml



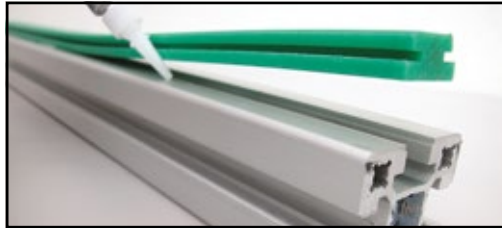
Flange

## CRC QUICK FIX

Cyanoacrylate adhesive for general, non-structural bonding on metals and plastics.

Designed for general use. CRC Quick Fix has a relatively slow curing time, enabling correct positioning for precise work during some seconds.

Ref.	SIZE
30710	Tube in Blister 3 g
30709	Bottle 20 g



## CRC FAST STICK

Fast tacking, non-chlorinated spray adhesive.

This specialist formulation will provide instant 'grab', allowing stress to be exerted on the bond before full cure strength is achieved. Especially useful for vertical surfaces where instant grab avoids slippage. Tack time approximately 30 seconds.

Ref.	SIZE
30383	Aerosol 500 ml



## CRC POWER STICK

High strength adhesive.

Does not contain Methylene Chloride or other chlorinated solvents. CRC Power Stick has a long open bond time, allowing large areas to be covered before the film dries. Use where a high strength adhesive is required e.g. upholstery, warning and information signs. Tack time approximately 2-10 minutes.

Ref.	SIZE
30454	Aerosol 500 ml



# ACCESSORIES

## CRC HAND SPRAYER

Simple refillable spraybottle.

The spray pressure is generated by a trigger movement. The hand sprayer can be used for all CRC bulk products except the cleaners.

Ref.	SIZE
32168	Handsprayer 500 ml



## CRC PUMP SPRAYER

Refillable spraybottle.

The pressure for spraying is generated by a manual pump system. The pressure available in the bottle allows a constant spray pattern for a longer time. The pump sprayer can be used for most CRC bulk products.

Ref.	SIZE
30463	Pumpsprayer 1L



## CRC REFILLABLE CAN

The refillable can combines the benefit of using bulk products with the features of an aerosol.

The can is brought to a pressure of 8 bars by filling it with compressed air through a standard compressor and filter/regulator unit.

Ref.	SIZE
30663	Refill Can
32239	Refill Can Gas Station
30667	Spare parts kit



## CRC HANDCLEANER ACCESSORIES

Rack for easy suspension of the cleaner reservoir.

The cover of the reservoir can be exchanged by the handpump. The handpump allows an easy dispensing without spillage and without contaminating the reservoir with dirty hands.

Ref.	SIZE
10871	Rack for 2,5L Handcleaners
10902	Dispenser for 2,5L Handcleaners



## CRC GREASE GUN

An easy loading grease gun for a standard 400g grease cartridge.

Ref.	SIZE
30669	Grease Gun





Ref. 91100437



Ref. 30244-AB



Ref. 30655-AF



Ref. 30654-AA

**COMING SOON!**



## **WOODEN FLOOR DISPLAY**

- ECO friendly material
- Full color print
- Easy assembly (no tools required)



## **ACCREDITED ISO 9001:2008!**



We understand your reliance on quality and conformance, and value your trust in us to deliver. All CRC products undergo stringent quality control tests at every stage of product production.

Our product specification procedures begin many months (and even years) before a new product is launched and encompass pilot plant trials, field trials and long-term storage stability testing. By rigorously applying these procedures to all our products, we can ensure the highest levels of reliability, safety and performance in use.

Checks routinely performed on CRC Aerosols include:

### **1. Raw material testing**

To confirm that all product ingredients are as specified

### **2. Bulk blend testing**

All product batches are tested for conformance to predefined specifications before being filled into aerosol packs.

Typical tests include:

- Specific gravity checks
- Viscosity checks
- Moisture content analysis
- Infra-red analysis

### **3. Filled aerosol testing**

All filled packs are subjected to many performance and safety checks including:

- Crimp checks
- Labelling checks
- Weight checks
- Pressure checks

### **4. Water bath testing**

Every single aerosol we produce passes through a hot-water bath to assess pack integrity at elevated temperatures.

### **5. Storage trials**

Prior to production, CRC products are tested for long-term storage and reliability trials - that's why most CRC products have a shelf life of 6-years!

### **6. Product specific tests**

Different product applications will require specific test criteria, such as accelerated corrosion testing, evaluation of release properties and material compatibility testing.





CHECK OUT OUR NEW ANIMATED PRODUCT VIDEOS!

You **Tube**

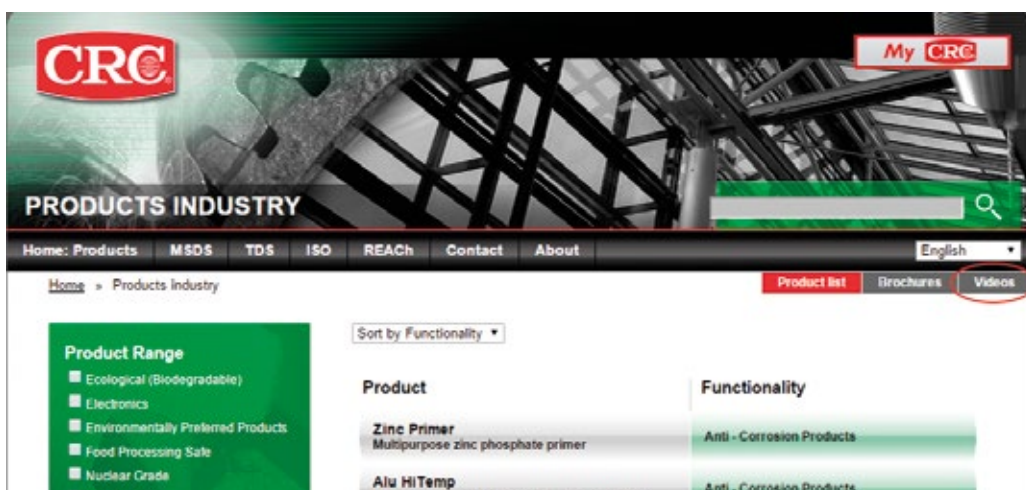
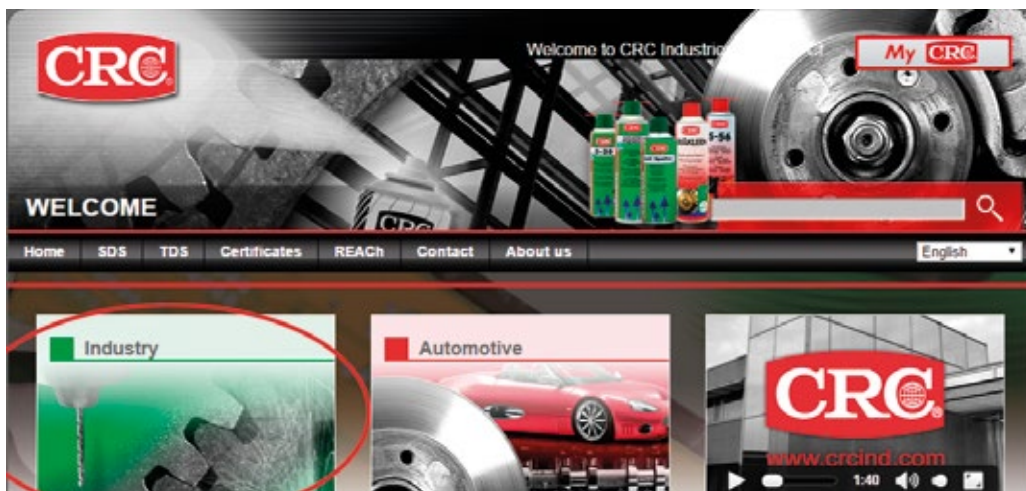


## CRC Industries Europe can now be found on Youtube!

Search for CRC Industries Europe on Youtube and you will be able to view all our new animated product videos! Subscribe to the channel and you will automatically receive updates on new videos!

## Or find our animated movies on the website!

- Go to [www.crcind.com](http://www.crcind.com)
- Click on the Industry tab
- Click on videos



[WWW.CRCIND.COM](http://WWW.CRCIND.COM)

# GLOSSARY OF TERMS

## AEROSOL

A self-contained sprayable product comprising of a mixture of active ingredients, carriers and propellant contained in a steel or aluminium container which discharges the formulation under pressure. Aerosols are hermetically sealed, ensuring risk of spillage is removed, storage simplified, and combustion risks minimised - all benefiting Health & Safety guidelines. Assists with precise and controlled application.

## BARRIER PROTECTION

Barrier protection is one of two primary methods of protecting metals from corrosion. By coating the metal with a suitable product (e.g. Acrylic Paints; Bright, Cold Galvanise; Inox 200, etc), corrosion is unable to take place because electrolytes (such as rain water) are unable to come into contact with the metal and an electron flow cannot be established, thus preventing galvanic corrosion.

## BIODEGRADATION / BIODEGRADABLE

The process by which organic substances are broken down into harmless constituents by the natural action of living micro-organisms.

## CATHODIC PROTECTION

Cathodic protection is based on the ionic charge of the metal and the reversal or mitigation of the flow of electrons as found in galvanic corrosion. The protective coating applied should have a lower potential (volts) than the metal it is to protect so that the coating is corroded in preference to the base metal - with protection often extending beyond the physical edge of the coating. By offering itself for corrosion instead of the base metal, this type of coating is often termed 'sacrificial' and is, in essence, how galvanised steel is protected.

## DIELECTRIC STRENGTH

The maximum electrical field strength that an insulating material can withstand intrinsically without decomposing, usually specified in volts per millimetre of thickness. Also known as the breakdown voltage.

## EDTA

EDTA is the chemical compound ethylenediaminetetraacetic acid, also known as diaminoethanetetraacetic acid disodium salt. It is most commonly used as a constituent in water based cleaning chemicals to bind with a water soluble compound. This use has now become less prominent due to concerns over the biodegradability and EDTA has also found some specialist uses as a preservative in some processed foods and cosmetics.

## EMULSION

A combination of water-soluble and water-insoluble chemical groups held together by a surfactant. Emulsions are usually milky white.

## EPP

See page 5.

## EVAPORATION RATE

The rate at which a material will vaporise (evaporate) when compared to the known rate of vaporisation of a standard material. The designated standard material is usually n-butyl acetate, with a vaporisation rate designated as 1.0. The higher the number, the faster the evaporation rate.

## FDA

The FDA (Food and Drugs Administration) ensures that all ingredients used in foods are safe, and that food is free of contaminants such as disease-causing organisms, chemicals, or other harmful substances. The FDA reviews the results of laboratory, animal and human clinical testing conducted by companies to determine if the product they wish to place on the market is safe and effective. The FDA does not develop or test products itself, nor issue approvals.

## FILM STRENGTH

The measurement of a lubricant's ability to keep an unbroken film during operation (load) conditions.

## FLASH POINT

The lowest temperature at which the vapors of a solvent will flash (ignite) under specific test conditions.

## GALLING

The process by which metal components 'cold weld' and seize. When two metals are brought together under pressure, the action of forcing the surfaces together can cause the contacting faces to begin to combine at an atomic level, fusing the pieces together. Where stainless steel or aluminum alloys are used, the friction can scour off the thin, non-reactive protec-

tive oxide layer, exposing clean reactive material - allowing atomic fusing to occur. Galling can be prevented by the use of a lubricant, such as bearing grease, however, grease needs to be 'worked' before full lubrication is achieved, therefore a running-in paste should be used to prevent galling in this start-up period.

## GALVANIC CORROSION

Is an electrochemical process which occurs when two metals with differing electrical potentials are in contact with each other in the presence of an electrolytic solution (such as rain water).

## GALVANISING

Galvanising is the process by which clean, degreased ferrous metal (i.e. steel) has a layer of zinc applied to its surface using extreme heat to form an inseparable alloy at the point where the two layers are fused. Zinc will be corroded in preference to the ferrous substrate thereby preventing structural corrosion. This type of coating is referred to as a 'sacrificial coating'.

## ISO 9001

Internationally recognised Quality Management system standard, indicating our commitment to quality and continuous improvement. The standard has been developed to provide a framework around which a quality management system can effectively be implemented.

## KB VALUE

The Kauri Butanol (KB) value is a measure of the relative solvent power of a hydrocarbon liquid. The higher the KB value, the more powerful the solvent.

## MODULUS

Where two substrates/surfaces are bonded together with either an adhesive or sealant, they are often subject to forces which could, with enough pressure, result in the bond failing. Modulus is measured in Pascal's. Low modulus means the bond is more flexible and has more 'give' in it, i.e. good for expansion joints. High modulus means that the bond is stiffer and less flexible.

## MRO

Abbreviation for the term "Maintenance, Repair, and Overhaul". Typically associated with the service and repair sectors, including plant and site maintenance / engineering.

## NLGI GRADE

A widely used classification for lubricating greases established by the National Lubricating Grease Institute and a reference to the measure of the consistency of a particular grease. The most common consistency number is #2. Softer grades, especially #0 and #1, are often used for improved low-temperature service. High consistency numbers, #3 through #6 are used for certain high-speed bearings where leakage and sealing are particular concerns. The higher the number, the more viscous the grease.

## NSF EXPLAINED

See page 4.

## OZONE DEPLETERS

Halogen-containing substances known to reduce the protective effects of the stratospheric ozone layer. Aerosols manufactured within Europe have been free of ozone depleting substances for many years.

## pH

A scale ranging from 0 to 14 used to measure acidity and alkalinity. The lower the number the more acidic; the higher the number, the more alkaline; 7 is neutral.

## POTABLE WATER

Water of sufficient quality to serve as drinking water is called potable water whether it is used as such or not. Although most fresh water sources are drinkable by humans, they can be a disease vector or cause long-term health problems if they do not meet certain water quality guidelines.

## POUR POINT (PP)

The lowest temperature at which a fluid still can be pumped.

## PTFE

PTFE is the abbreviation for polytetrafluoroethylene. PTFE appears in the Guinness Book of Records as having the lowest coefficient of static and dynamic friction of any solid. This value, at 0.02, is equivalent to wet ice on wet ice, indicating its extreme anti-friction properties.

## REACH

Registration, Evaluation and Authorisation of Chemicals. REACH is an EU-wide reform of the regulatory environment in which chemicals are used and will eventually replace and update many other pieces of chemical control legislation. The aim is to reduce the risks to human health and the environment through the methodical and accurate identification of the properties of chemical substances. Whilst there is no definitive list of 'approved' chemicals as yet, a series of deadlines will ensure that the highest volume and most harmful are evaluated first. REACH relies on end-user application information to be filtered up through the supply chain to establish accurate registration and evaluation. More information can be found at: [www.hse.gov.uk/reach](http://www.hse.gov.uk/reach).

## RAL

In 1925, the private sector and the German government founded the "Reichsausschuss für Lieferbedingungen" - RAL - (Committee of the German Reich for Terms and Conditions of Sale). RAL's original task was to standardise precise technical terms of delivery and sale. The RAL color collection comprises over 200 colors with a four-digit numbering. The registers also include safety and signal colors and they comply with the requirements of the DIN standards (German Industrial Standards). The basic collection for matt color shades is the register RAL 840 HR while it is the RAL 841 GL register for gloss colors. RAL 840 HR is the European-wide 'registered' standard colors for the coatings industry.

## RTV - ROOM TEMPERATURE VULCANISATION

Vulcanisation refers to a specific curing process of rubber involving high heat and the addition of sulphur. It is a chemical process in which polymer molecules are linked to other polymer molecules resulting in springy rubber molecules which become cross-linked. This makes the material harder, much more durable and also more resistant to chemical attack. Vulcanisation which occurs without the need for heat and sulphur, usually by the addition of activating chemicals, is known as Room Temperature Vulcanisation as the rubber 'cures' at around 25°C.

## SHELL 4-BALL WELD

An industry standard test which provides an indication of the load bearing capability of a lubricant. A steel ball is loaded and rotated against 3 fixed steel balls for 10 seconds. At the end of each 10 second run, a further weight is loaded onto the balls, and the test re-run using fresh lubricant. The test is complete when the balls weld together. The weld point is the load at which this occurs. The higher the weld point, the greater the lubricity (lubricating ability) of the grease.

## SURFACTANT

A descriptive term derived from 'Surface Active Agent', a specialised compound that is typically used to connect water soluble and water-insoluble chemical groups. Can be used to improve the emulsifying, foaming, dispersing and wetting properties of a product

## THIXOTROPIC

A term used to describe fluids which are shear thinning. In essence, most thixotropic substances are gel-like, meaning that they retain their shape upon application, but when heated or subjected to shear stress, their shape will change and they will become thinner. The word comes from the Greek 'thixis' for touch and -tropy, from 'tropos' meaning changeable.

## USDA

See page 4.

## VISCOSITY

A term used to describe the resistance to flow or degree of 'thickness' of a liquid, usually expressed in units of poise or Stokes. The more viscous a product, the thicker its consistency.

## VISCOSITY INDEX (VI)

Relationship of viscosity in function of temperature.

The information given in this publication is based on our experience and reports from customers. There are many factors outside our control and knowledge which affect the use and performance of our products and for which reason no warranty is given, express or implied. Users should make their own tests to determine the applicability of such information or the suitability of any products for their own particular purposes. Statements concerning the use of the products described herein are not to be construed as recommending the infringement of any patent and no liability for infringement arising out of any such use is to be assumed.

# INDEX



## CLEANERS



## LUBRICANTS



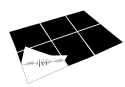
## ANTI-CORROSION



## PAINTS



## WELDING



## ADHESIVES



## SPECIALTY



## ACCESSORIES

2-26	46	INOX KLEEN - FPS	15
3-36 - FPS	24, 37	INOX WELD KLEEN	14, 49
5-56 + PTFE	24	LABEL OFF SUPER - FPS	13
ACRYL RAL	45	LECTRA CLEAN II	12
ALU HITEP	39	LUB 21	23
ANTI SPATTER	49	LUB OIL 32	35
ANTI SPATTER PASTE	49	LUB OIL 46	35
AQUA MARKER PAINT	43	LUB OIL PAO 150	34
AQUA MARKER PEN	44	LUB OIL PAO 220	34
AQUA RAL	45	LUB OIL PAO 32	35
AQUA STRIPING PAINT	44	LUB OIL PAO 320	34
ASSEMBLY PASTE - FPS	31	LUB OIL PAO 46	35
BELT GRIP	46	LUB OIL PAO 68	35
CHAIN LUBE - FPS	26	MARKER BALL	44
CRC CITRUS HANDCLEANER	18	MARKER PAINT	43
CONTACT CLEANER	11	MARKER PEN	44
CONTACT CLEANER PLUS	11	METAL FREE PASTE	31
COPPER PASTE	31	MINUS 50	47
CRICK 110	50	MULTI GREASE	28
CRICK 120	50	MULTI OIL - FPS	26
CRICK 130	50	MULTI SURFACE CLEANER	17
DRY LUBE	27	N.F. PRECISION CLEANER	11
DRY LUBE-F - FPS	27	PEEL OFF	46
DRY MOLY LUBE	27	PEN OIL - FPS	25
DUST FREE	10	PENETRATING OIL (+ MOS <sub>2</sub> )	25
DUST FREE - FPS	10	PIPE DE-BLOCKER	16
EASY SEAL	52	POWER LUBE	24
EASY WELD	49	POWER STICK	53
ECO BIO WELD	49	PUMP SPRAYER	54
ECO COLD CLEANER	14	QD-CONTACT CLEANER	11
ECO COMPLEX BLUE - FPS	15	QUICK FIX	53
ECO FOAM CLEANER - FPS	15	REFILLABLE CAN	54
ECO LEAK FINDER - FPS	47	RIGID SEAL	52
ECO PEN OIL	25	ROM 300	47
ECO SUPERCUT	22	ROST FLASH	24
EP FOOD GREASE - FPS	28	RUST CONVERTER	40
EXTRA LOCK	52	RUST REMOVER	40
EXTREME LUBE	30	SCALE REMOVER	16
FAST DRY DEGREASER	12	SILICONE	25
FAST STICK	53	SILICONE - FPS	25
FERROKLEEN PRO	40	SILICONE GREASE	30
FOOD GREASE - FPS	28	SOFT LOCK	52
FOODKLEEN - FPS	14	SOLID MARKER	44
GALVA BRITE	38	SP 350	37
GALVA SHINE	39	SP 400	37
GALVACOLOR	40, 45	STRIPING PAINT	44
GEAR & WIRE ROPE LUBE	26	SUPER ADHESIVE GREASE	29
GLASS BLANK RELEASE	27	SUPER HANDCLEANER	18
GRAFFITI REMOVER	13, 16	SUPER LT GREASE (+ MOS <sub>2</sub> )	29
GRAPHITE ASSEMBLY PASTE (+ MOS <sub>2</sub> )	31	SUPER TAPPING COMPOUND	23
GREASE GUN	54	SUPER TAPPING FLUID	23
HAND SPRAYER	54	SUPERCUT	22
HAND WIPES	19	TRAFFIC FILM REMOVER	17
HANDCLEANER	18	URETHANE ISOLATION	39
HANDCLEANER ACCESSORIES	54	VERTICAL MARKER	43
HEAVY DUTY DEGREASER	17	WHITE LITHIUM GREASE (PTFE)	30
HIGH TEMP GREASE	29	WIPES	19
HITEMP FOOD GREASE - FPS	28	ZINC	38
INDUSTRIAL DEGREASER - FPS	12	ZINC PRIMER	38
INOX 200	39		

Your CRC Distributor



CRC Industries Europe  
Touwslagerstraat 1  
BE-9240 Zele  
Belgium  
Tel.: +32 (0) 52 45 60 11

[www.crcind.com](http://www.crcind.com)